

GenePattern

Tutorial

Software Copyright

The Broad Institute
SOFTWARE COPYRIGHT NOTICE AGREEMENT

This software and its documentation are copyright 2006 by the Broad Institute/Massachusetts Institute of Technology.
All rights are reserved.

This software is supplied without any warranty or guaranteed support whatsoever. Neither the Broad Institute nor MIT
can be responsible for its use, misuse, or functionality.

The GenePattern Tutorial introduces you to GenePattern by providing step-by-step instructions for analyzing gene expression. GenePattern provides two user interfaces, the Web Client and Desktop Client:

- Part 1 provides instructions for the Web Client
- Part 2 provides instructions for the Desktop Client

Both parts use the same example session. Each part is independent; you can run through Part 1, Part 2 or both.

[About GenePattern](#)

Describes the GenePattern platform.

[Installing GenePattern](#)

Describes how to install the GenePattern software.

[Scientific Scenario](#)

Describes the example dataset that you will use and the analyses that you will perform.

[Starting the GenePattern Server](#)

Describes how to start the GenePattern server.

[Part 1: Using the GenePattern Web Client](#)

Provides step-by-step instructions for running the analyses in the Web Client. Estimated time: 90 minutes

[Part 2: Using the GenePattern Desktop Client](#)

Provides step-by-step instructions for using the Desktop Client. Estimated time: 90 minutes

[Part 3: Shutting Down the GenePattern Server](#)

Provides step-by-step instructions for exiting from GenePattern.

All of the information you need to successfully complete this tutorial is contained in the tutorial. For users who like additional discussion along the way, the tutorial includes pointers to more information in other GenePattern guides. Feel free to follow these links or to ignore them, depending on your learning style.

About GenePattern

GenePattern is a client-server application that provides access to a broad array of computational methods used to analyze genomic data:

- The server is the GenePattern engine that runs the analyses and stores analysis results. The GenePattern server can be installed on your desktop computer or installed in a networked location for use by multiple users.
- The client is the user interface that you use to interact with the GenePattern server. You can use one of three GenePattern clients:
 - The Web Client provides access to GenePattern from any web browser. This interface provides easy access to GenePattern for users of all levels, as well as providing access to server administration functions.
 - The Desktop Client, which you download and install, provides access to GenePattern from a Java application that you run on your desktop computer. This interface provides easy access to GenePattern for users of all levels.
 - The Programming Environment provides access to GenePattern from the Java, MATLAB, and R programming environments. It allows programmers to access GenePattern from their applications.

This tutorial introduces you the Web Client and the Desktop Client. It does not cover the programming environment.

Installing GenePattern

To follow the hands-on instructions in this tutorial, you must have done the following:

- Installed the GenePattern server
- Installed the following modules: ComparativeMarkerSelection, ComparativeMarkerSelectionViewer, ExtractComparativeMarkerSelection, and HeatMapView
- Downloaded the sample datasets

For instructions on installing GenePattern and its modules, see the [installation instructions](#).

Scientific Scenario

The gene expression dataset used in the tutorial is from [Golub and Slonim et al. \(1999\)](#), which used clustering and prediction algorithms to find genes that distinguish between two subtypes of leukemia, ALL and AML. The dataset consists of 38 bone marrow samples (27 ALL, 11 AML) obtained from acute leukemia patients.

For the purposes of this tutorial, your goal is identify **marker genes** for the two subtypes of leukemia:

1. You use the ComparativeMarkerSelection (version 3) analysis to find the genes in the dataset file that are most closely correlated with the two subtypes of leukemia.
2. You use the ComparativeMarkerSelectionViewer (version 4) to examine the results of that analysis.
3. You use the ExtractComparativeResults (version 3) analysis to create a new dataset that contains the marker genes that you have identified.
4. You use the HeatMapView (version 5) to examine the expression levels of the marker genes and to confirm that the marker genes are clearly differentially expressed in the two subtypes of leukemia.

Note: Analysis modules are regularly updated. If you have a more recent version of any module, follow the instructions as closely as possible, but be aware that your results might not match those shown in the tutorial.

Starting the GenePattern Server

You must start the GenePattern server before you can start either the GenePattern Web Client or the GenePattern Desktop Client. The server takes several seconds to start; clients cannot connect to it while it is starting.

To start the GenePattern server, double-click the Start GenePattern Server icon, shown below. By default, the GenePattern installation places this icon on your desktop.



StartGenePatternServer

On Windows, while the server is starting, a console window displays messages. The server is ready when the console displays the following message:

```
*****  
GenePattern server version 3.0 build 3.0.719 built Fri, Feb 9 2007 is ready.  
*****
```

On Mac OS X, while the server is starting, the server icon bounces in the Dock. The server is ready when the icon stops bouncing. If you want to read the messages, see the Console.

Part 1: Using the GenePattern Web Client

This part of the tutorial introduces you the GenePattern Web Client. In this part, you learn how to:

- Start the Web Client.
- Run analyses.
- Review analysis results.
- Save and delete analysis results files.
- Create a pipeline that runs a sequence of analyses.

If you would rather use the GenePattern Desktop Client, go to [Part 2: Using the GenePattern Desktop Client](#).

Starting the Web Client

To start the GenePattern Web Client:

1. Double-click the GenePattern Web Client icon. By default, the GenePattern installation places this icon on your desktop.

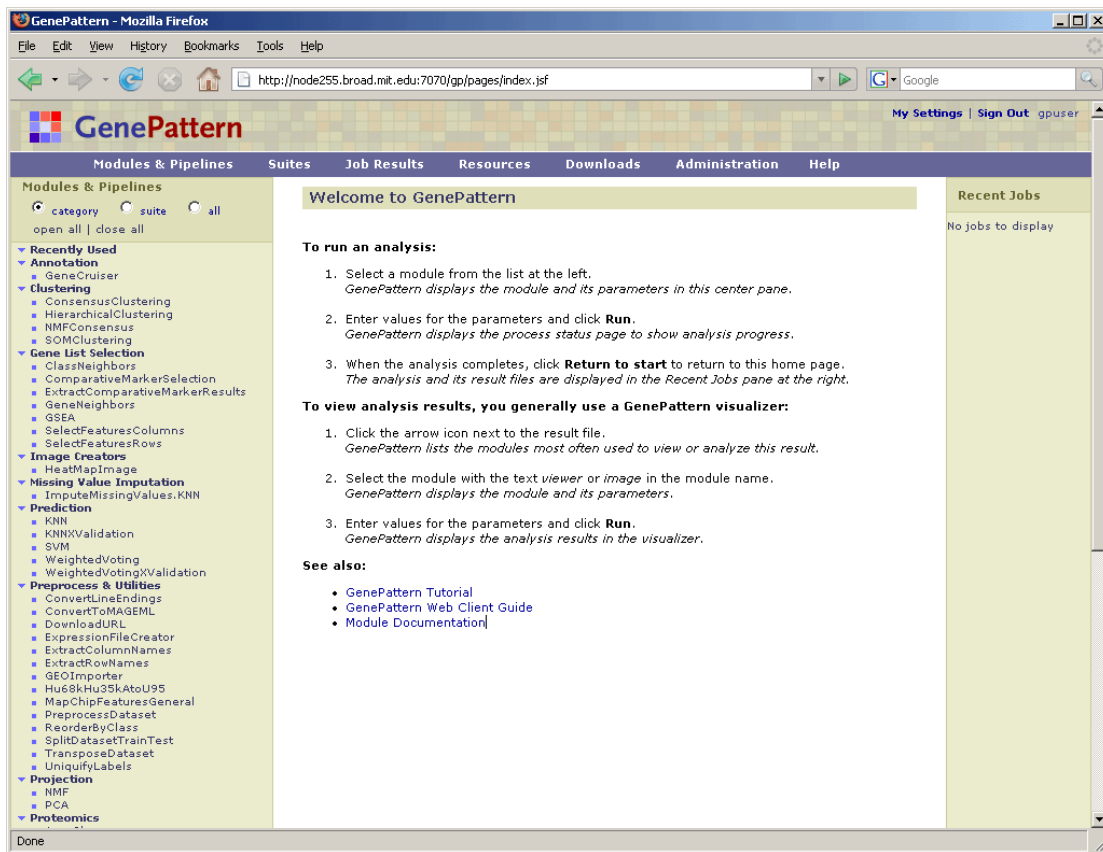


GenePatternHome.html

The Web Client displays the login page starts in your default web browser. This figure shows the login page prompting only for a username; you might also be prompted for a password.

Note: The pictures in the tutorial show the Web Client running in a Firefox web browser on a Windows PC. If you are using a different web browser or a different operating system, your screen may look slightly different.

2. Enter your username, or your username and password.
3. Click Sign In. The Web Client displays the start page.



Notice the following elements of the Web Client start page:

- The URL shows you the GenePattern server that you are using. The Web Client, which remains connected to the server throughout the session, runs all of your analyses on this server.
- The upper right corner shows your user name. Typically, your GenePattern user name is your e-mail address.
- The Modules & Pipelines panel lists the analyses that you can run. By default, the analyses are organized by functional category.
- The center panel, which displays the welcome message, is the main display panel for the Web Client. The Web Client uses this panel to display information and to prompt you for input.
- The Recent Jobs panel lists the last four analyses that you have run and their generated analysis results files. When you first start the Web Client, this panel is empty.
- The navigation bar provides access to other Web Client pages.

For more information: see [Exploring the User Interface](#) in the *GenePattern Web Client Guide*.

Running Analyses

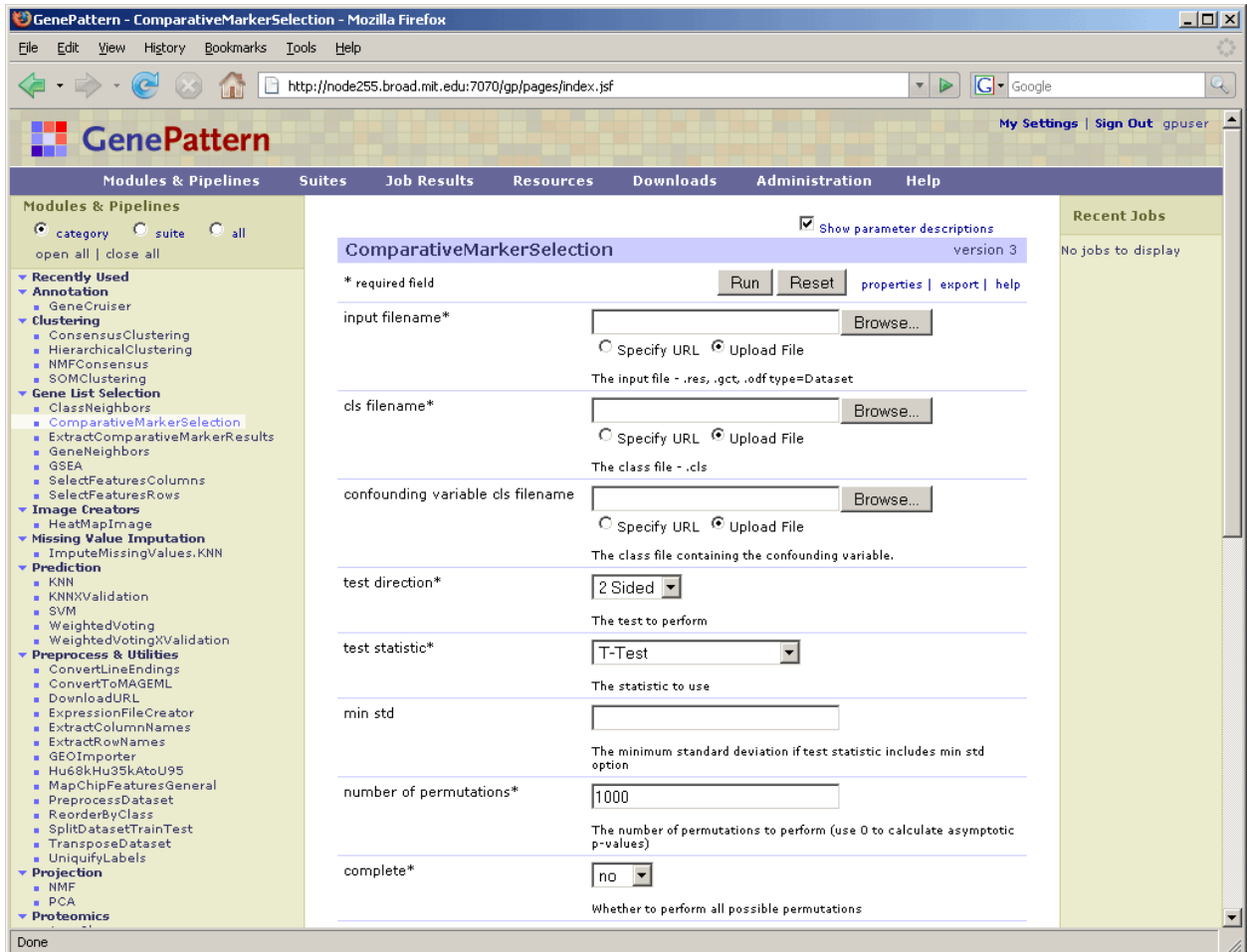
Now that you have started the GenePattern server and Web Client, you are ready to analyze your data. In this section, you learn how to:

- Run the `ComparativeMarkerSelection` analysis to find marker genes -- the genes in the dataset that are most closely correlated with the two phenotypes (ALL and AML) in the dataset.
- Run the `ComparativeMarkerSelectionViewer` to examine the `ComparativeMarkerSelection` analysis results.
- Run the `ExtractComparativeResults` analysis to create a smaller dataset that contains only the marker genes.
- Run the `HeatMapView` to examine the expression levels of the marker genes.

Running Comparative Marker Selection

Run the ComparativeMarkerSelection analysis to find the genes in the dataset that are most closely correlated with the two phenotypes (ALL and AML) in the dataset. To run the ComparativeMarkerSelection analysis:

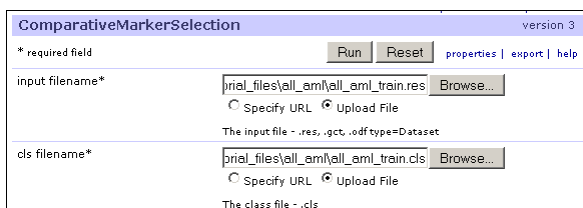
1. In the Modules & Pipelines panel, under Gene List Selection, select the ComparativeMarkerSelection analysis. The analysis and its parameters appear in the center panel.



2. For information about the module and its parameters, click *help*.
3. For the *input filename* parameter, select the `all_aml_train.res` file:
 1. Click the *Browse* button. The File Upload window appears.
 2. Navigate to the folder containing the file.
 3. Select the file and click *Open*.

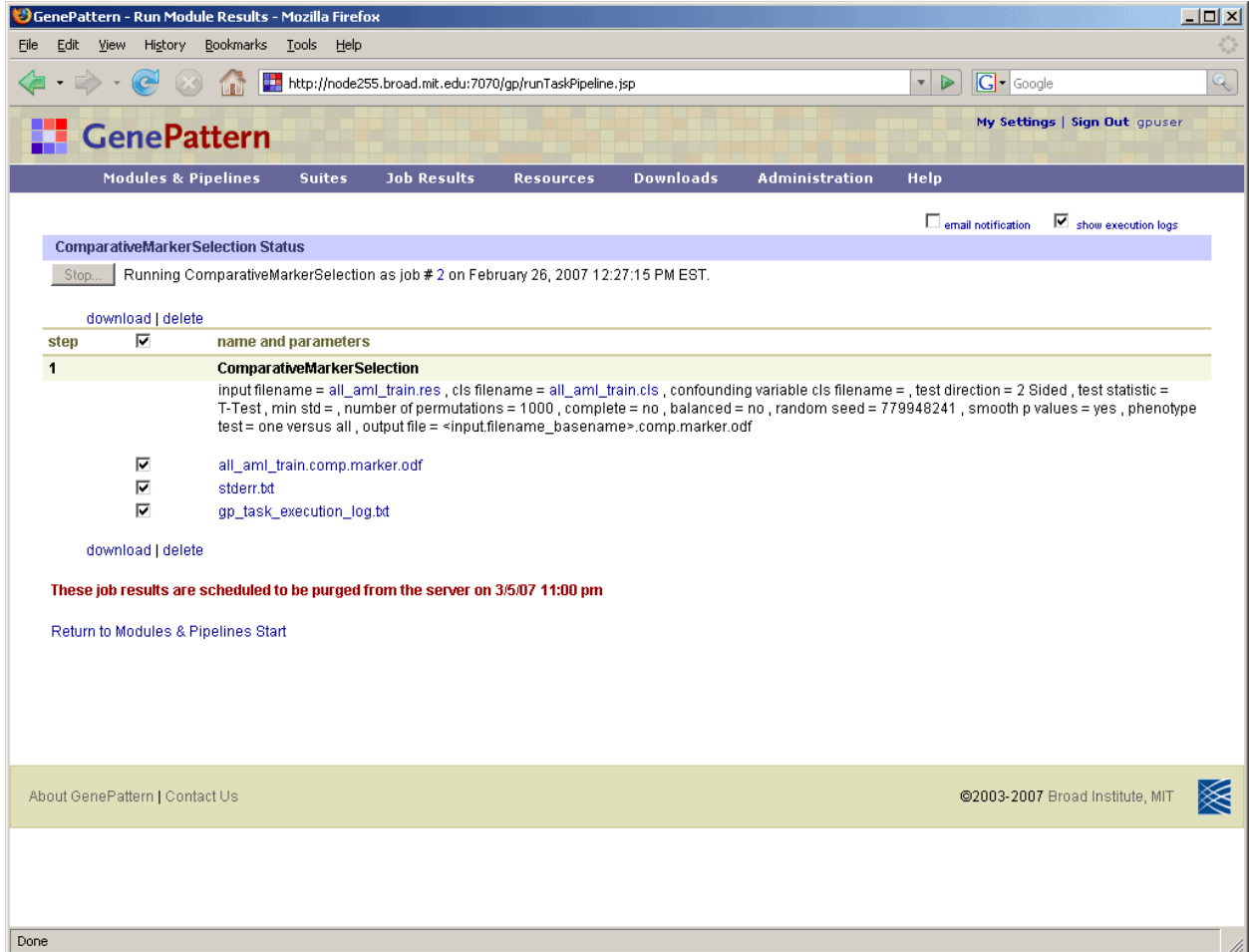
Leave the *Upload File* radio button selected to indicate that you are selecting a file from the file system. You would use the *Specify URL* radio button to select a networked file by specifying its URL.

4. For the *cls filename* parameter, select the `all_aml_train.cls` file.



- Click *Run* to start the analysis. The Web Client sends the analysis job to the GenePattern server and displays the ComparativeMarkerSelection Status page. After a few seconds, the GenePattern server finishes the analysis job and displays the results on the Status page.

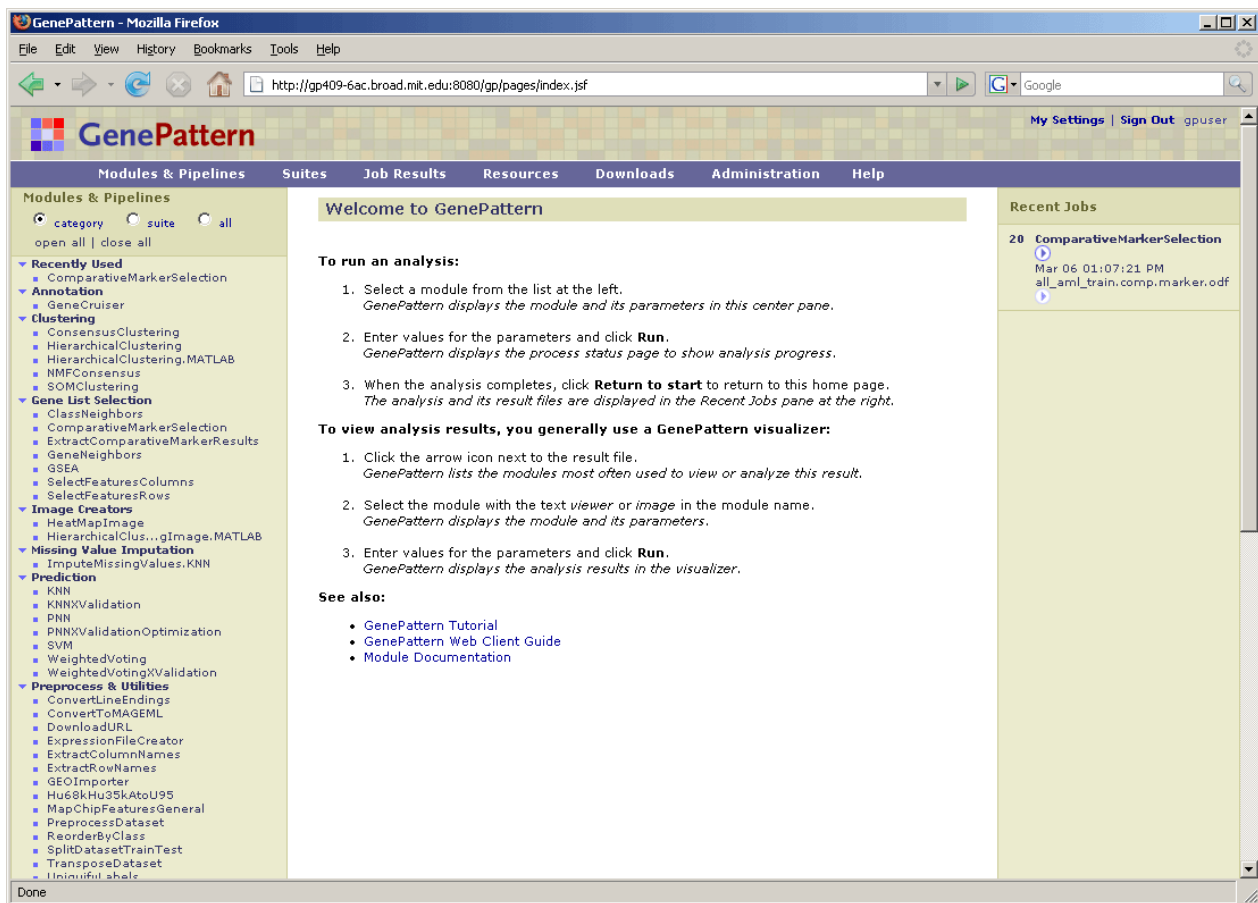
Analysis results are stored on the GenePattern server. By default, analysis results are stored for seven (7) days before being deleted. The text shown in a **bold red** font tells you when the analysis results will be deleted. To save your analysis results, copy the files from the GenePattern server to your own directories, as described later in this tutorial.



- Click *Return to Modules & Pipelines Start* to return to the Web Client start page.

Reviewing Result Files

When you return to the Web Client start page, the Recent Jobs pane shows the analysis job that you ran on the GenePattern server and the associated analysis results files:



1. Click the icon next to the analysis job to display commands that you use to work with the job:

Download	Downloads a zip file containing all analysis results files for this job.
Reload	Displays the analysis and its parameters in the center pane, with the parameters set to the values used for this analysis job.
Delete	Deletes the analysis job and its analysis results files from the GenePattern server.
Info	Displays the parameter values and the analysis results files for this job.
View Java Code View MATLAB Code View R Code	Displays the command line that you would use to run this job in the Java, MATLAB, or R programming environments. These commands are useful for programmers who want to access GenePattern from one of these programming environments or from their own applications.

2. Click the icon next to an analysis results file to display commands that you use to work with the file:

Delete	Deletes the file from the GenePattern server.
Save	Downloads the file from the GenePattern server.
Create Pipeline	Creates a GenePattern pipeline that reproduces this analysis results file. Pipelines are discussed later in this tutorial.
List of analyses	Lists analyses that commonly use this type of file as an input parameter. Select an analysis to display its parameters in the center pane, with this results file specified as the first input parameter.

3. Click the analysis results file, `all_aml_train.comp.marker.odf`, to display it in a text viewer. The amount of information it contains makes the file difficult to understand. This file, like most analysis results file, is not intended to be viewed as a text file, but rather intended to be used as input to subsequent analyses.
4. Click the *Back* button in your web browser to return to the Web Client start page.

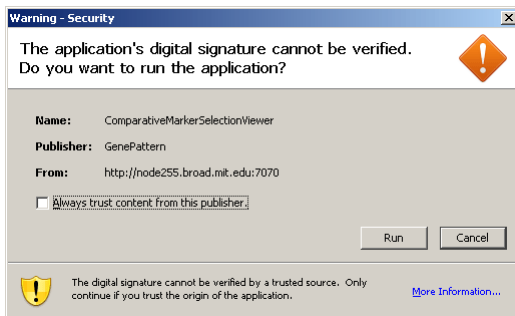
Running the Comparative Marker Selection Viewer

After running the `ComparativeMarkerSelection` analysis, run the `ComparativeMarkerSelectionViewer` to examine the analysis results. To run the `ComparativeMarkerSelectionViewer`:

1. In the Recent Jobs pane, click the icon next to your `all_aml_train.comp.marker.odf` results file.
2. Select *ComparativeMarkerSelectionViewer*. The `ComparativeMarkerSelectionViewer` and its parameters appear in the center pane. The *comparative marker selection filename* parameter is automatically set to the `all_aml_train.comp.marker.odf` results file.

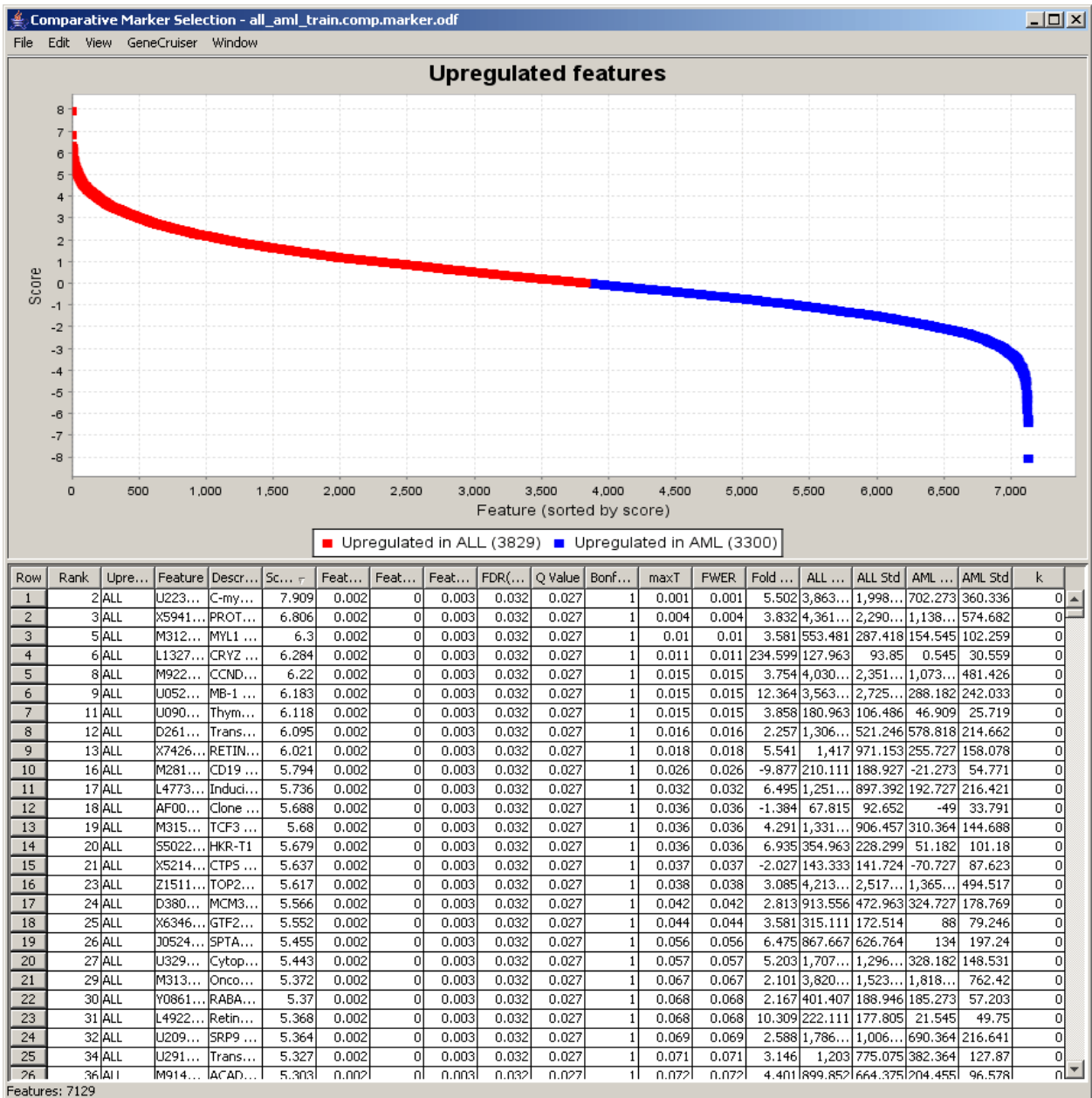
3. For the *dataset filename* parameter, click *Browse* and select the `all_aml_train.res` file.
4. Click *Run*.

Unlike most analyses, viewers run on your desktop PC rather than on the GenePattern server. The first time you run a viewer on your desktop, the following security message may appear.



5. If the security message appears, click *Run* to continue.

The `ComparativeMarkerSelectionViewer` appears:



6. In the ComparativeMarkerSelectionViewer:

- The *Score* column shows the value of the metric used to correlate gene expression and phenotype. A high score indicates correlation with the first phenotype (upregulated in ALL) and a low score indicates correlation with the second phenotype (upregulated in AML).
- The middle columns, FDR through FWER, provide different ways to measure the significance of the score. The lower the value the more significant the result. For example, you might choose to measure significance using the false discovery rate (FDR) and set a significance cutoff of $FDR < .05$. Using this measure, you would focus on genes with the lowest and highest scores, where the measure of significance for the score was an $FDR < .05$.

7. To close the ComparativeMarkerSelectionViewer, select *File>Exit*.

8. In the Web Client, click *Return to Modules & Pipelines Start* to return to the Web Client start page.

Notice that the ComparativeMarkerSelectionViewer analysis does not appear in the Recent Jobs pane. This is because the ComparativeMarkerSelectionViewer ran on your local PC, not on the GenePattern server.

Running Extract Comparative Results

Now that you have examined the ComparativeMarkerSelection analysis results, you want to create a new dataset that contains only the most promising marker genes from the results file for further analysis. To run the ExtractComparativeResults analysis:

1. In the Recent Jobs pane, click the icon next to the ComparativeMarkerSelection results file, all_aml_train.comp.marker.odf.
2. Select *ExtractComparativeMarkerResults*. The ExtractComparativeMarkerResults analysis and its parameters appear in the center pane. The *comparative marker selection filename* parameter is automatically set to the all_aml_train.comp.marker.odf results file.
3. For the *dataset filename* parameter, click *Browse* and select the all_aml_train.res file.
4. Enter the following parameter values to extract the top 100 features (genes) in the analysis results file:
 - For the *field* parameter, select Rank.
 - For the *max* field, enter 100.

ExtractComparativeMarkerResults version 3

* required field [properties](#) | [export](#) | [help](#)

comparative marker selection filename*
 Specify URL Upload File
The results from ComparativeMarkerSelection - .odf

dataset filename*
 Specify URL Upload File
The dataset file used to select markers - .gct, .res, Dataset

field
The field to filter features on

min
Select features with field >= min

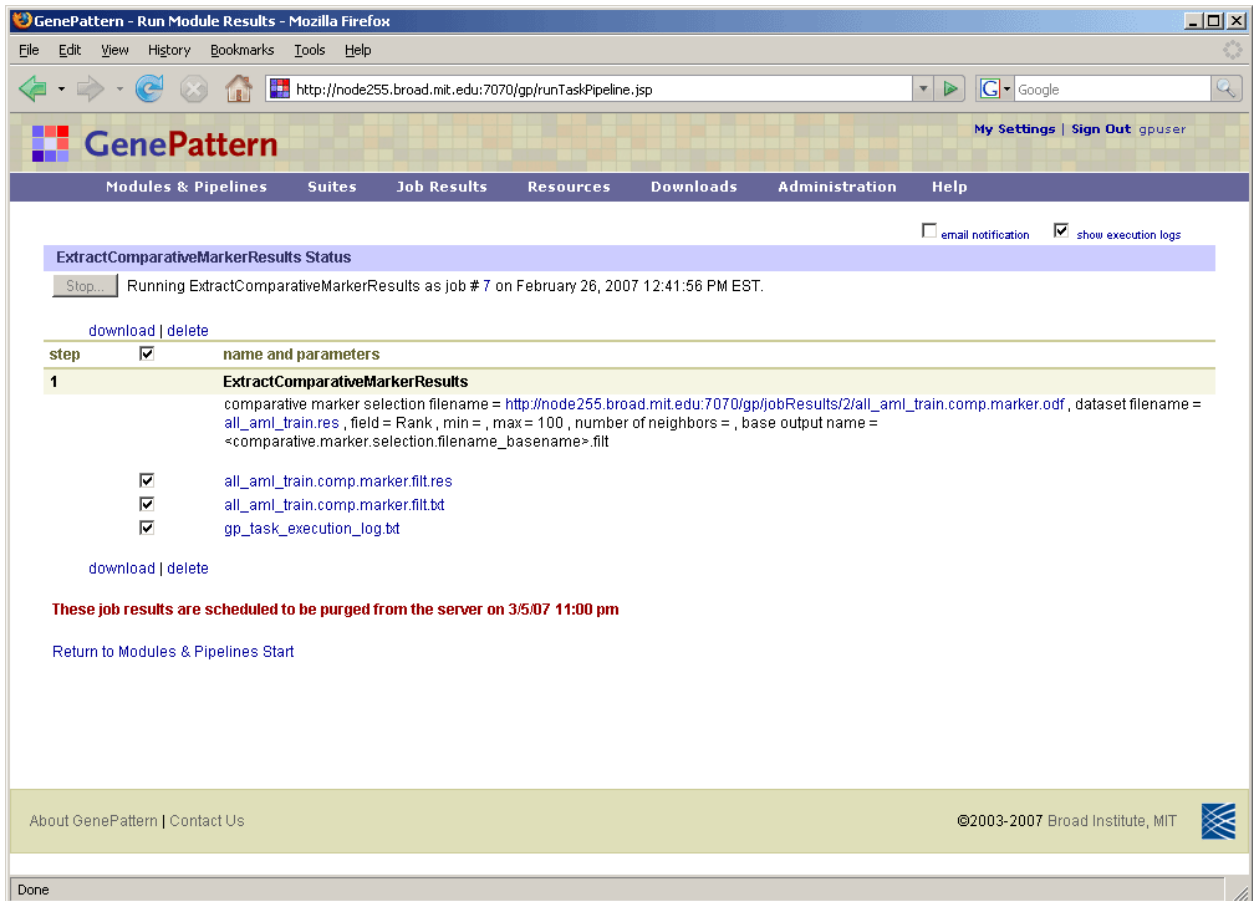
max
Select features with field <= max

number of neighbors
Number of neighbors to select by score in each direction

base output name*
The base name for the output files

[properties](#) | [export](#) | [help](#)

5. Click *Run*. The Status page appears and, after a few seconds, displays the analysis results files.



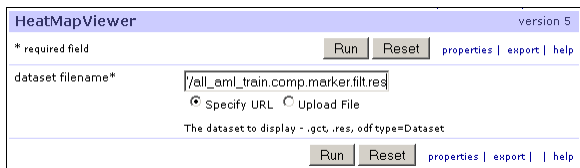
- Click *Return to Modules & Pipelines Start* to return to the Web Client start page.

Running the Heat Map Viewer

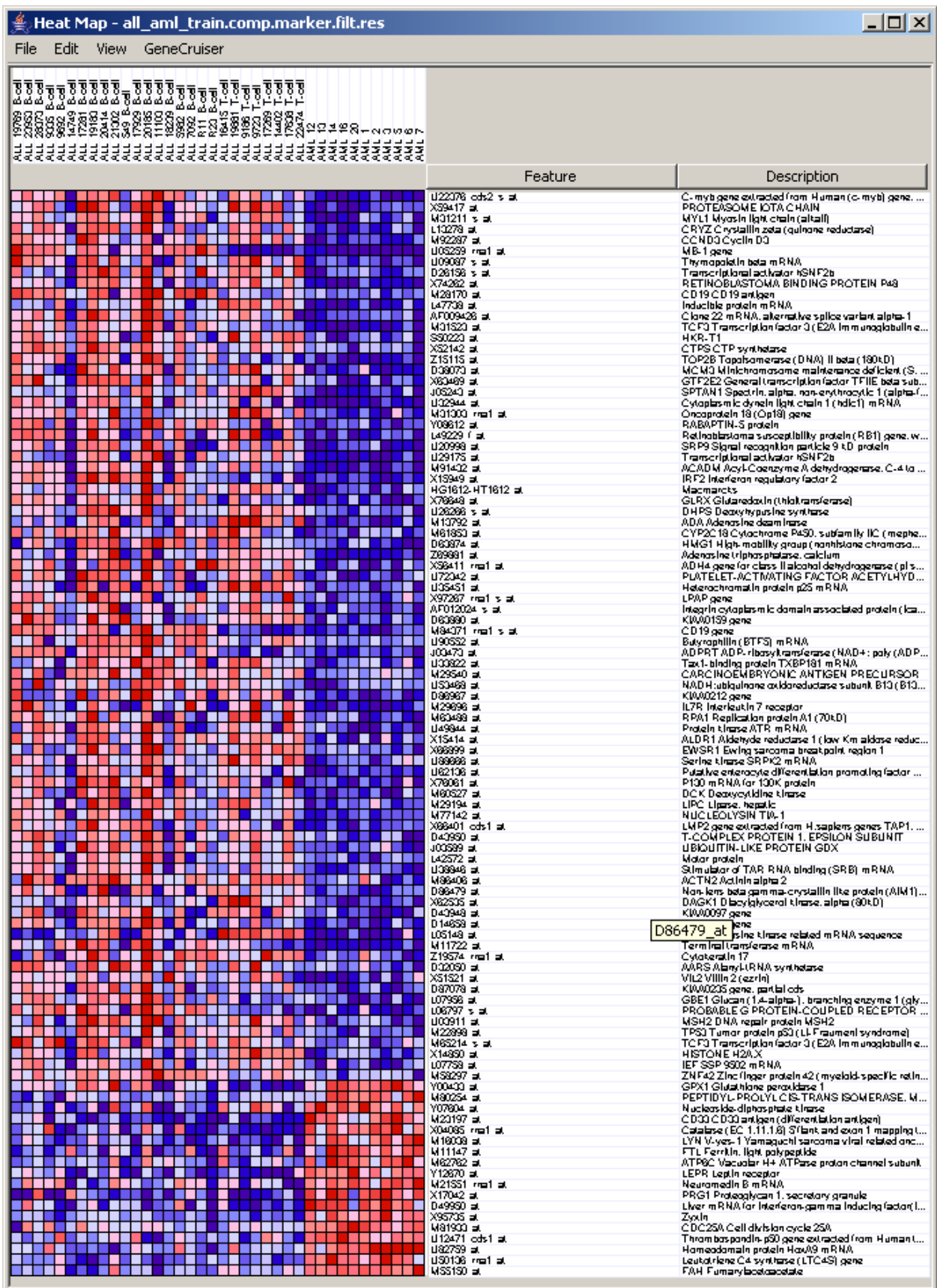
The HeatMapView displays expression values in a color-coded heat map. The largest expression values are displayed in red (hot) and the smallest values are displayed in blue (cool). Intermediate values are displayed in different shades of red and blue. The color-coding provides a quick coherent view of gene expression levels.

To display your new dataset in the HeatMapView:

- In the Recent Jobs pane, click the icon next to the results file from the ExtractComparativeMarkerResults analysis, `all_aml_train.comp.marker.filt.res`.
- Select *HeatMapView*. The HeatMapView and its parameters appear in the center pane. The *dataset filename* parameter is automatically set to the `all_aml_train.comp.marker.filt.res` results file.



- Click *Run*. The HeatMapView appears:



4. In the HeatMapViewer, adjust the grid size for a clearer view of the sample and feature names:

1. Click *Edit>Display Options*.
2. Click-and-drag the *Grid Size* slider 4 or 5 points to the right. The Viewer displays the grid using larger cells.
5. To close the HeatMapView, select *File>Exit*.
6. In the Web Client, click *Return to Modules & Pipelines Start* to return to the Web Client start page.

Using Pipelines

As you have seen, the GenePattern Web Client makes it easy to run individual analyses and to review analysis results. GenePattern pipelines take this one step further: they make it easy to run multiple analyses. You can define a pipeline to run multiple analyses against a single dataset or to run a sequence of analyses, where the output from one analysis becomes the input for a subsequent analysis. Modules run from a pipeline work exactly the same as those run directly from the Web Client.

In this tutorial, you have run two analyses: Comparative Marker Selection and Extract Comparative Marker Results. The analysis results file from the first analysis became the input file for the second analysis. Running these two analyses produced a new dataset that contains the 100 genes in your dataset (`all_aml_train.res`) that are most closely correlated with phenotypes in your class file (`all_aml_train.cls`).

In this section, you will

- Create a pipeline that duplicates your analysis results.
- Edit the pipeline so that it operates on any set of data (`res` and `cls`) files.

For more information: see [Working with Pipelines](#) in the *GenePattern Web Client Guide*.

Creating a Pipeline Based on Previous Results

You can create a pipeline in one of two ways:

- You can create an empty pipeline and then add to it the analysis modules that you want the pipeline to run.
- You can create a pipeline based on an analysis results file. In this case, GenePattern adds to the pipeline the analysis modules used to create that results file:
 1. It adds the module that created the results file.
 2. It checks the module's input file parameter.
 3. If the input file for the module was the output file of a previous module, the GenePattern adds the previous module and returns to step 2; otherwise, there are no more modules to be added to the pipeline.

To create a pipeline based on the `ExtractComparativeMarkerResults` results file:

1. In the Recent Jobs pane, click the icon next to the results file from the `ExtractComparativeMarkerResults` analysis, `all_aml_train.comp.marker.filt.res`.
2. Select *Create Pipeline*. The Web Client displays the new pipeline in the center pane.

The new pipeline includes the module that created the results file, `ExtractComparativeMarkerResults`. The new pipeline also includes the `ComparativeMarkerSelection` analysis because the input file for `ExtractComparativeMarkerResults` was the output file from the `ComparativeMarkerSelection` analysis. The parameters for both analyses are set to the values used to generate the results file. (You will need to scroll to see the entire pipeline.)

Pipeline Designer - job7.pipeline version 1

Pipeline name*: 1
 Description:
 Author: name, affiliation
 Privacy:
 Version comment:
 Documentation:
 LSID: urn:lsid:7070.gene patt.node255.broad.mit.edu.gene pattern.modules:1:1

1. ComparativeMarkerSelection: version 3

Computes significance values for features using several metrics, including FDR(BH), Q-Value, maxT, FWER, Feature-Specific P-Value, and Bonferroni.
 documentation: [ComparativeMarkerSelection.pdf](#)

prompt when run	parameter name	value	description
<input type="checkbox"/>	input filename:	<input type="text" value=""/> <input type="button" value="Browse..."/>	The input file - .res, .gct, .odf type=Dataset
<input type="checkbox"/>	cls filename:	<input type="text" value="<GenePatternURL>getFile.jsp?task=<LSID>&file=all_train.res"/> <input type="button" value="Browse..."/>	The class file - .cls
<input type="checkbox"/>	confounding variable cls filename:	<input type="text" value=""/> <input type="button" value="Browse..."/>	The class file containing the confounding variable.
<input type="checkbox"/>	test direction:	<input type="text" value="2 Sided"/>	The test to perform
<input type="checkbox"/>	test statistic:	<input type="text" value="T-Test"/>	The statistic to use
<input type="checkbox"/>	min std:	<input type="text" value=""/>	The minimum standard deviation if test statistic includes min std option
<input type="checkbox"/>	number of permutations:	<input type="text" value="1000"/>	The number of permutations to perform (use 0 to calculate asymptotic p-values)
<input type="checkbox"/>	complete:	<input type="text" value="no"/>	Whether to perform all possible permutations
<input type="checkbox"/>	balanced:	<input type="text" value="no"/>	Whether to perform balanced permutations
<input type="checkbox"/>	random seed:	<input type="text" value="779948241"/>	The seed of the random number generator used to produce permutations
<input type="checkbox"/>	smooth p values:	<input type="text" value="yes"/>	Whether to smooth p-values
<input type="checkbox"/>	phenotype test:	<input type="text" value="one versus all"/>	Tests to perform when cls file has more than two classes (Note: not fully corrected for multiple hypothesis testing)
<input type="checkbox"/>	output file:	<input type="text" value="<input.filename>_basemar"/>	The name of the output file

2. ExtractComparativeMarkerResults: version 3

Creates a derived dataset and feature list file from the results of ComparativeMarkerSelection
 documentation: [ExtractComparativeMarkerResults.pdf](#)

prompt when run	parameter name	value	description
<input type="checkbox"/>	comparative marker selection filename:	<input type="text" value=""/> <input type="button" value="Browse..."/>	The results from ComparativeMarkerSelection
		or use output from <input type="text" value="1. ComparativeMarkerSelection"/> <input type="text" value="1st output"/>	.odf
<input type="checkbox"/>	dataset filename:	<input type="text" value=""/> <input type="button" value="Browse..."/>	The dataset file used to select markers - .gct, .res, Dataset
		<GenePatternURL>getFile.jsp?task=<LSID>&file=all_train.res	
		or use output from <input type="text" value="1. ComparativeMarkerSelection"/>	
<input type="checkbox"/>	field:	<input type="text" value="Rank"/>	The field to filter features on
<input type="checkbox"/>	min:	<input type="text" value=""/>	Select features with field >= min
<input type="checkbox"/>	max:	<input type="text" value="100"/>	Select features with field <= max
<input type="checkbox"/>	number of neighbors:	<input type="text" value=""/>	Number of neighbors to select by score in each direction
<input type="checkbox"/>	base output name:	<input type="text" value="<comparative.marker.sel"/>	The base name for the output files

- By default, the pipeline name is the job number. Change the pipeline name to MyComparativeMarkerSelection by editing the *Pipeline name* field.

Adding Modules to a Pipelines

The pipeline contains the two analysis modules used to create the analysis results file: Comparative Marker Selection and Extract Comparative Marker Results. In your original analysis, after creating the analysis results file, you used the Heat Map Viewer to review the results.

To add the Heat Map Viewer module to your pipeline:

- Scroll to the end of the pipeline definition.
- Click *Add Another Module* to add a module after the ExtractComparativeMarkerResults analysis. The Web Client prompts you for the module to add:

Module Category & Name:

3. Select **Visualizer** as the category and **HeatMapView** as the module:

Module Category & Name:

- Module -

- caArrayImporter - A visualizer to import data from caArray into Ge...
- ComparativeMarkerSelectionViewer - Views the results from ComparativeM...
- FeatureSummaryViewer - Feature Summary Viewer
- GeneListSignificanceViewer - Views the results of marker analysis
- HeatMapView - Displays Heat Maps**
- HierarchicalClusteringViewer - Hierarchical clustering viewer that rea...
- JavaTreeView - Hierarchical clustering viewer that reads in Eisen's cd...
- MAGEMLImporter - A visualizer to import data in MAGE-ML format int...
- PCAViewer - Principal Component Analysis Visualizer (adapted from MeV...
- PredictionResultsViewer - Visualize prediction results
- SDMClusterViewer - Visualize clusters created with the SDM algorithm

The Web Client adds the HeatMapView module to the pipeline:

3. HeatMapView: version 5

Display a heat map
documentation: [HeatMapView.pdf](#)

prompt when run	parameter name	value	description
<input type="checkbox"/>	dataset filename:	<input type="text"/> <input type="button" value="Browse..."/>	The dataset to display - .gct, .res, .odf type=Dataset

or use output from

4. For the *dataset filename* parameter, select the analysis results file from the ExtractComparativeMarkerResults module. To do so: next to *use output from*, choose **ExtractComparativeMarkerResults** as the module and **res** as the output file:

3. HeatMapView: version 5

Display a heat map
documentation: [HeatMapView.pdf](#)

prompt when run	parameter name	value	description
<input type="checkbox"/>	dataset filename:	<input type="text"/> <input type="button" value="Browse..."/>	The dataset to display - .gct, .res, .odf type=Dataset

or use output from

5. Click *Save* to save the pipeline. The Web Client displays a status page.
6. Click *Return to Modules & Pipelines Start* to return to the start page.

Running the Pipeline

To run the pipeline:

1. In the Modules & Pipelines pane, select your pipeline. (Notice that the pipeline names are color-coded; the pipelines you create are displayed in red.) The Web Client displays the pipeline and its parameters in the center pane.
2. Click *Run* to run the pipeline. The Status page appears and GenePattern runs each module. After a few moments, GenePattern displays the analysis results and opens the HeatMapView.
3. Close the HeatMapView.
4. In the Web Client, click *Return to Modules & Pipelines Start* to return to the Web Client start page.

The Recent Jobs pane shows the pipeline job, which lists each analysis run and its analysis result files.

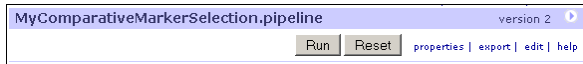
Adding Parameters to a Pipeline

You have created a pipeline that duplicates your original analysis: it runs the Comparative Marker Selection analysis on the `all_aml_train` data (`res` and `cls`) files, uses the analysis results as input to the Extract Comparative Marker Results analysis, and then displays the analysis results using the Heat Map Viewer.

You can make the pipeline more generally useful by having it prompt you for the data (`res` and `cls`) files to be analyzed, rather than simply analyzing the `all_aml_train` data files.

To edit the pipeline:

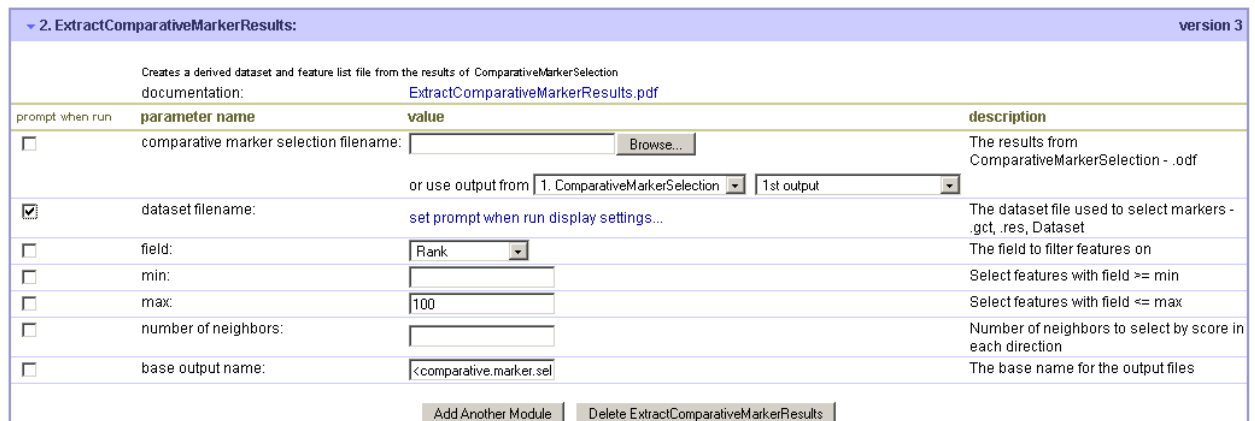
1. In the Modules & Pipelines pane, select your pipeline. The Web Client displays the pipeline in the center pane:



2. Click *Edit*. The Web Client displays the pipeline definition for editing.
3. The data (res and cls) files to be analyzed are named in the *input filename* and *cls filename* parameters of the Comparative Marker Selection analysis. Modify the pipeline to have it prompt you for these parameter values:
 1. Click on the *Prompt when run* check box next to the *input filename* parameter of the Comparative Marker Selection analysis. The Web Client removes the parameter value from the pipeline definition.
 2. Click on the *Prompt when run* check box next to the *cls filename* parameter of the Comparative Marker Selection analysis. The Web Client removes the parameter value from the pipeline definition.



3. Optionally, click *set prompt when run display settings* to modify the default text of the prompt.
4. The data (res) files to be analyzed is also named in the *dataset filename* parameter of the Extract Comparative Marker Results analysis. Modify the pipeline to have it prompt you for this parameter value also:
 1. Click on the *Prompt when run* check box next to the *dataset filename* parameter of the Extract Comparative Marker Results analysis:



2. Optionally, click *set prompt when run display settings* to modify the default text of the prompt.
5. Scroll to the end of the pipeline definition.
6. Click *Save*. The Web Client displays a message confirming that the pipeline has been saved.
7. Click *Return to Modules & Pipelines Start* to return to the Web Client start page.

Running the Edited Pipeline

To run the edited pipeline:

1. In the Modules & Pipelines pane, select your pipeline. The Web Client displays the pipeline and its parameters in the center pane.

2. For the *ComparativeMarkerSelection input filename* parameter, select `all_aml_test.res`.
3. For the *ComparativeMarkerSelection cls filename* parameter, select `all_aml_test.cls`.
4. For the *ExtractComparativeMarkerResults dataset filename* parameter, select `all_aml_test.res`.
5. Click *Run*. The Status page appears and GenePattern runs each module. After a few moments, GenePattern displays the HeatMapView.
6. Close the HeatMapView.
7. In the Web Client, click *Return to Modules & Pipelines Start* to return to the Web Client start page.

Saving and Deleting Result Files

As described earlier in the tutorial, analyses are run on the GenePattern server and analysis results files are stored on the server. Server storage is temporary and analysis results files are deleted after they have been on the server for a certain length of time (by default, one week).

To save your analysis results files, you must copy each file from the server to a more permanent location. If you do not need your analysis results, you can delete them from the server at any time (deleted files are not visible from the Web Client).

To save an analysis results file:

1. In the Recent Jobs pane, click the icon next to a results file.
2. Click *Save*.

To delete an analysis results file:

1. In the Recent Jobs pane, click the icon next to a results file.
2. Click *Delete*.

To save or delete a job and all of its analysis results files, click the icon next to the job and click *Download* or *Delete*.

Next Steps

To learn how to use the GenePattern Desktop Client, continue with the next part of the tutorial.

To exit from GenePattern, go to [Part 3: Shutting Down the GenePattern Server](#).

Part 2: Using the GenePattern Desktop Client

This part of the tutorial introduces you to the GenePattern Desktop Client. In this part, you learn how to:

- Install the Desktop Client.
- Start the Desktop Client.
- Run analysis tools.
- Review analysis results.
- Save and delete analysis results files.
- Create a pipeline that runs a sequence of analyses.

- Synchronize the GenePattern Desktop Client with the GenePattern server.

Installing the Desktop Client

If you have not already installed the Desktop Client, install it now:

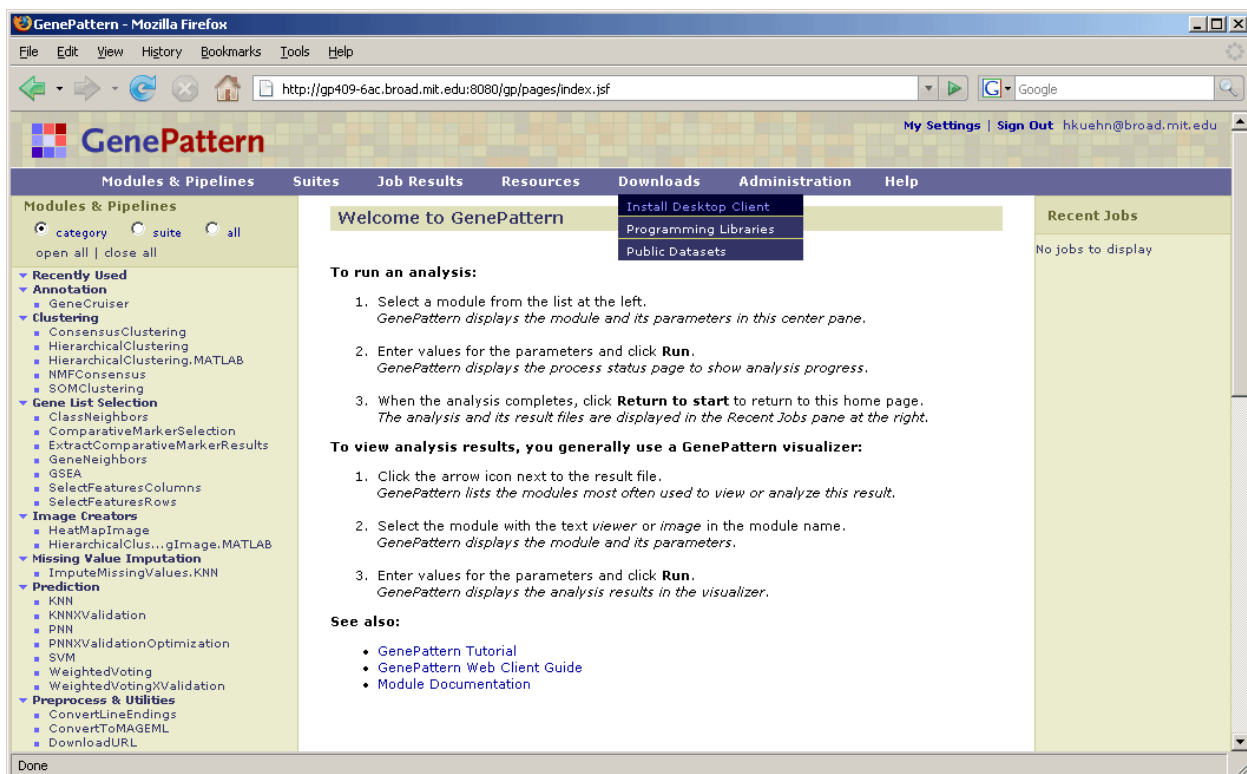
1. Download the installer for the Desktop Client:

1. Start the Web Client by double-clicking on the GenePattern Web Client icon, shown below. By default, the GenePattern installation places this icon on your desktop.



GenePatternH
ome.html

2. Select *Downloads>Install Desktop Client*.



The Web Client displays the software download page of the GenePattern web site.

3. Download the client installer for your platform.
2. Double-click on the downloaded installation file, GenePatternClient.exe, to begin the installation.
3. Follow the on-screen instructions.

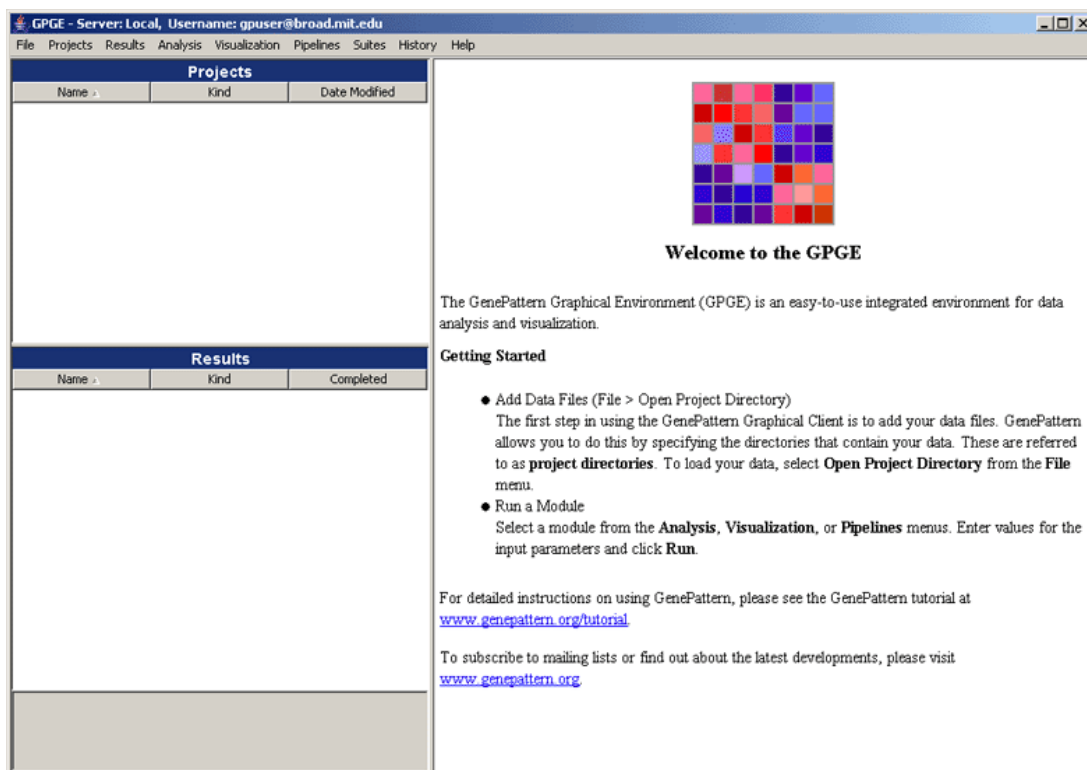
Starting the Desktop Client

To start the GenePattern Desktop Client, double-click the GenePattern Desktop Client icon, shown below. By default, the GenePattern installation places this icon on your desktop.



GenePattern
Client

A message informs you that the Desktop Client is retrieving modules and jobs from the GenePattern server. After a few seconds, the Desktop Client displays its welcome message:



Notice the following elements of the Desktop Client window:

- The title bar shows you the GenePattern server and user name that you are using. The Desktop Client, which remains connected to the server throughout the session, runs all of your analyses on this server. Typically, your GenePattern user name is your e-mail address.
- The Projects panel lists your project directories; that is, the directories holding the data files that you are analyzing. When you first start the Desktop Client, this panel is empty.
- The Results panel lists each analysis that you have run and its generated analysis results files. (If you have run analyses in the Web Client, the analysis jobs and analysis results files are listed here.)
- The panel on the right, which displays the welcome message, is the main window. The Desktop Client uses this window to display information and to prompt you for input.
- The menu bar lists the Desktop Client commands.

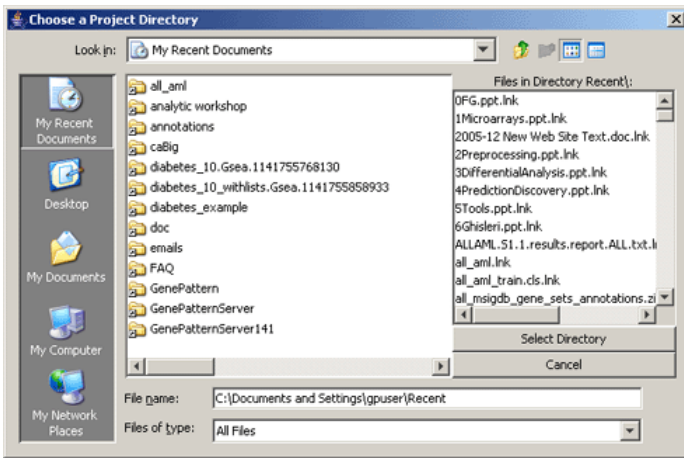
For more information: see [Menu Bar](#) in the *GenePattern Desktop Client Guide*.

Adding a Project Directory

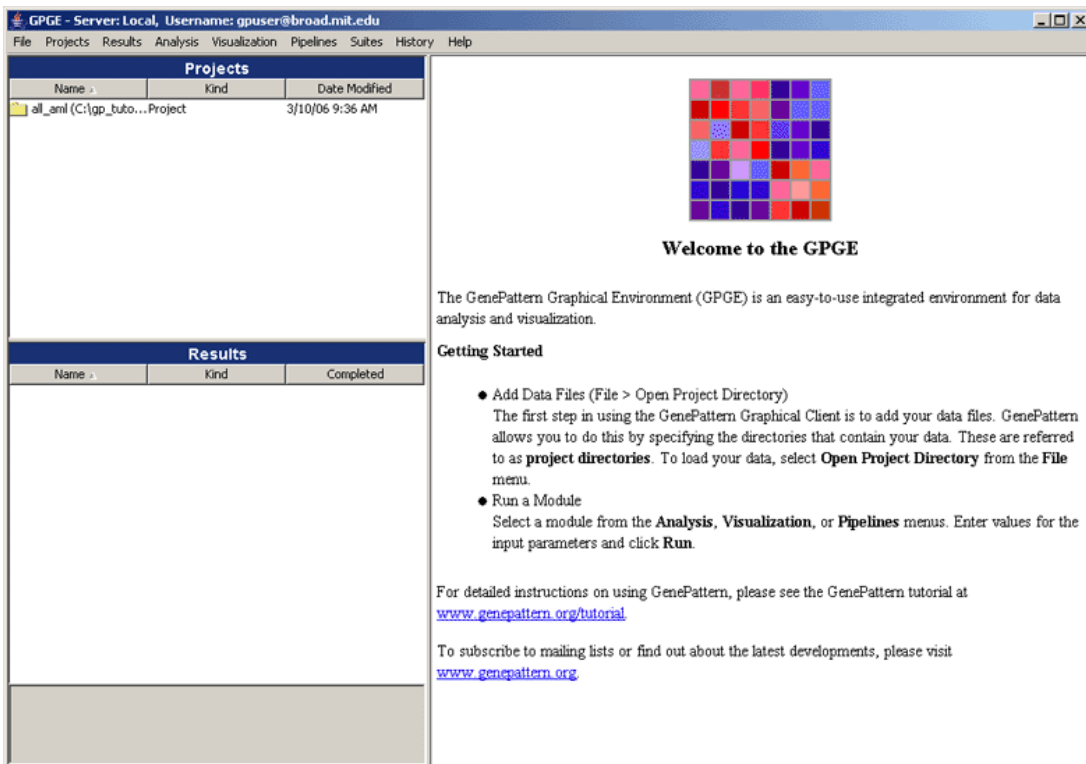
In the GenePattern Desktop, the directory that holds the files that you want to analyze is called a project directory. You do not have to add your project directories to the GenePattern Desktop Client, but doing so makes it easier to work with the files in those directories.

In this tutorial, you are analyzing the files in the `gp_tutorial_files/all_aml` directory. To add this project directory to the GenePattern Desktop Client:

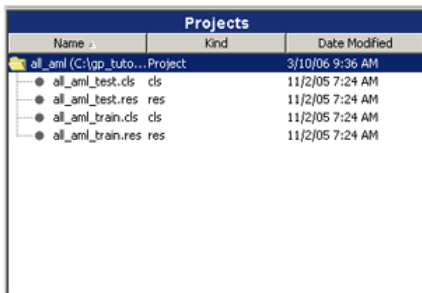
1. Select *File>Open Project Directory*. GenePattern displays the Choose a Project Directory window:



- In the Choose a Project Directory window, navigate to the `gp_tutorial_files/all_aml` directory and click *Select Directory*. GenePattern adds that directory to the Projects pane:



- In the Projects pane, double-click the directory name to see the files in the directory:



For more information: see [Projects Pane](#) in the *GenePattern Desktop Client Guide*.

Running Analyses

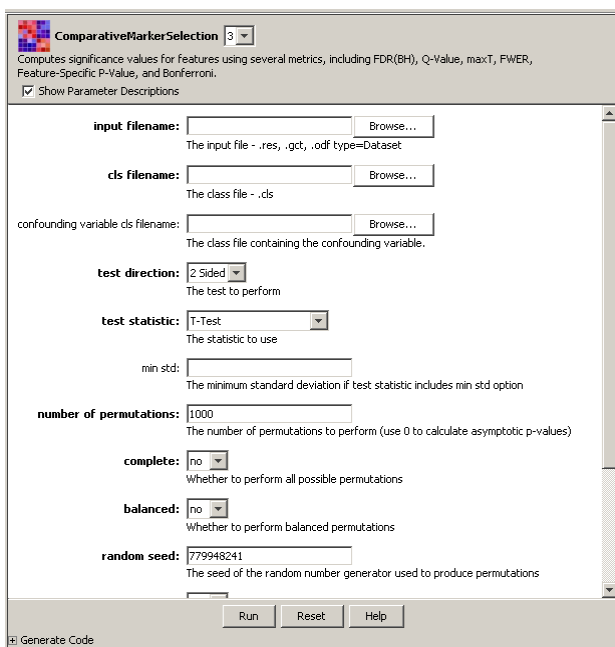
After adding the project directory, you are ready to begin analyzing your data. In this section, you learn how to:

- Run the ComparativeMarkerSelection analysis to find the genes in the dataset (.res) file that are most closely correlated with phenotypes in the class (.cls) file.
- Run the ComparativeMarkerSelectionViewer to examine the analysis results.
- Run the ExtractComparativeResults analysis to extract the most promising marker genes from your dataset.
- Run the HeatMapView to display a color-coded map showing the expression levels of the marker genes.

Running Comparative Marker Selection

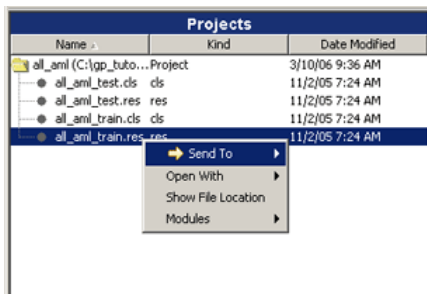
To run the Comparative Marker Selection analysis against the `all_aml_train` (res and cls) files in your project directory:

1. Select *Analysis>Gene List Selection>ComparativeMarkerSelection*. The analysis and its parameters appear in main window:

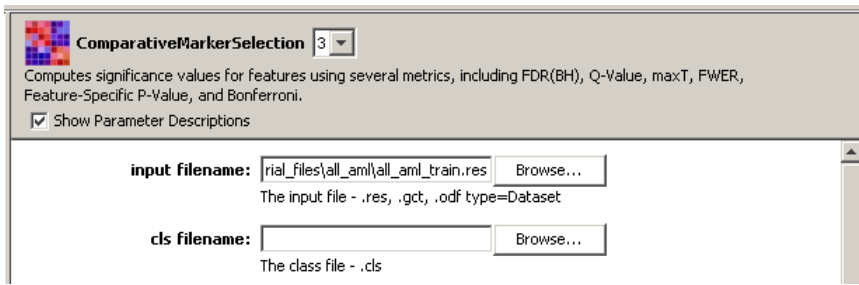


2. For the *input filename* parameter, select the `all_aml_train.res` file:

1. Right-click the `all_aml_train.res` file in the Projects pane. The following context menu appears:

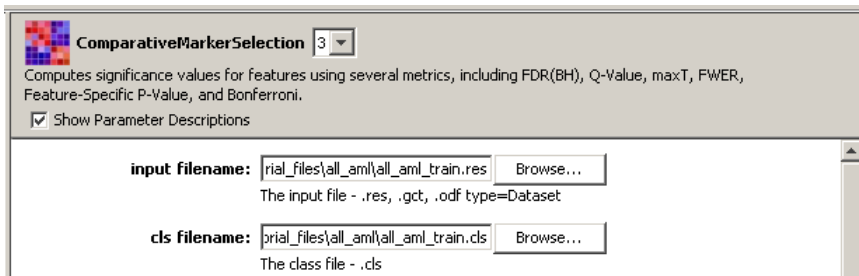


2. Select *Send to>input filename*. GenePattern sends the file to the *input filename* parameter.



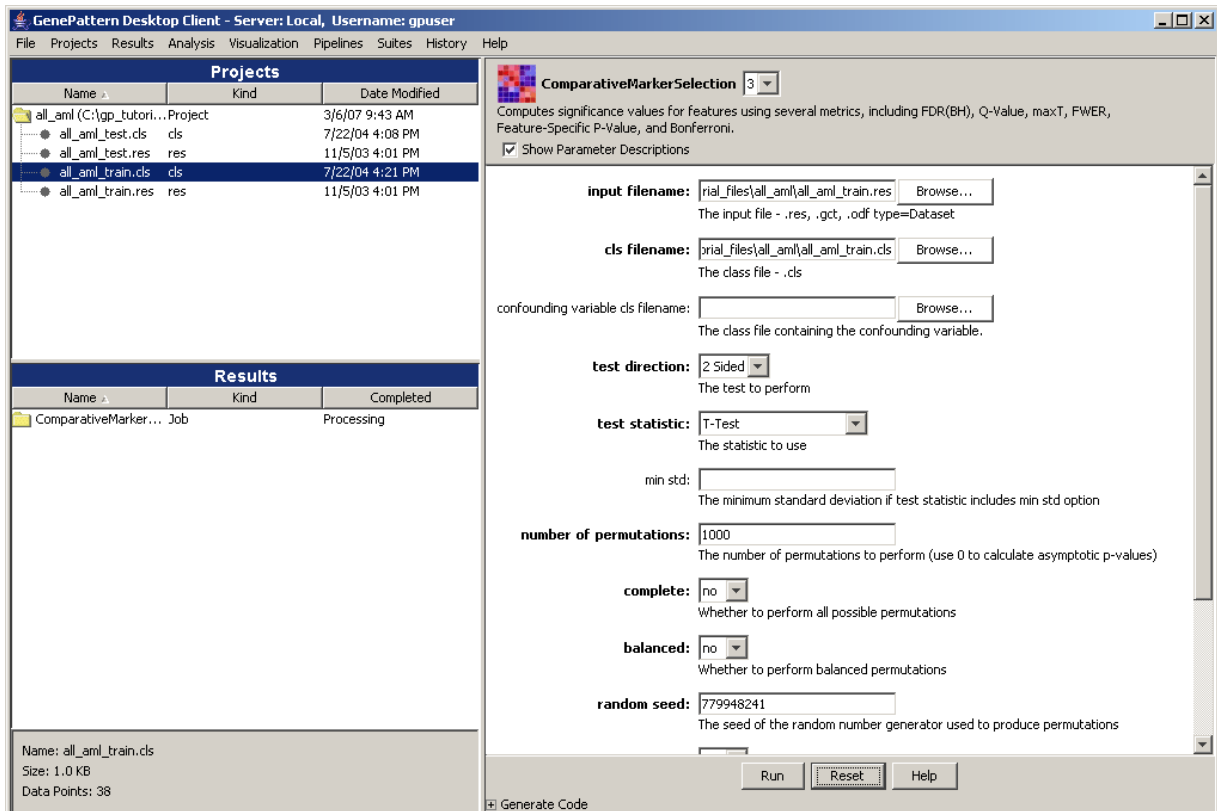
Most commands are available from either the menu bar or a context menu. In this step, you used a context menu to set the *input filename* parameter. In the next step, you use the menu bar to set the *cls filename* parameter.

3. For the *cls filename* parameter, select the *all_aml_train.cls* file:
 1. Click the *all_aml_train.cls* file in the Projects pane to select it.
 2. Select *Projects>Send to>cls filename*. GenePattern sends the file to the *cls filename* parameter:



Leave the remaining parameters set to their default values.

4. Optionally, click *Help* (at the bottom of the main window) to view the documentation for this analysis. Each analysis module has its own documentation.
5. Click *Run* to start the analysis. The analysis appears in the Results panel with a status of Processing:

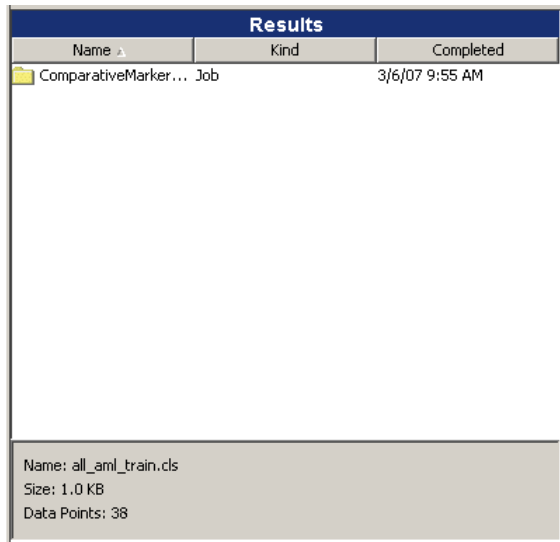


For more information: see [Running Analysis and Visualization Modules](#) in the *GenePattern Desktop Client Guide*.

Checking Job Status

When you click *Run* to start an analysis, the GenePattern Desktop Client sends your analysis request to the GenePattern server. The GenePattern server runs your analysis. When the analysis completes, the GenePattern server notifies the GenePattern Desktop Client. The GenePattern Desktop Client then notifies you in two ways:

- In the Results pane, the Desktop Client updates the Completed column to show the data and time the analysis finished:

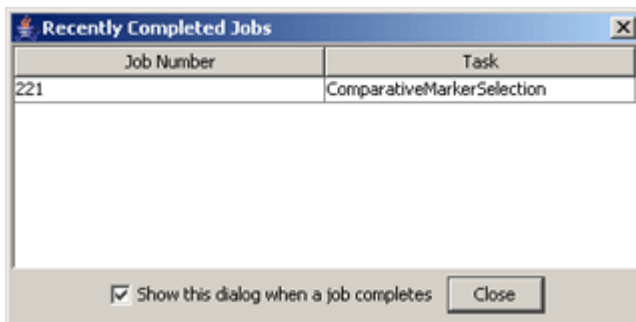


The screenshot shows a window titled "Results" with a table containing one row of data. Below the table, there is a text box with job details.

Name	Kind	Completed
ComparativeMarker... Job		3/6/07 9:55 AM

Name: all_aml_train.cls
Size: 1.0 KB
Data Points: 38

- By default, the Desktop Client also adds each finished analysis to the Recently Completed Jobs window. If this window is not open, the Desktop Client opens it:



The screenshot shows a dialog box titled "Recently Completed Jobs" with a table containing one row of data. At the bottom, there is a checkbox and a "Close" button.

Job Number	Task
221	ComparativeMarkerSelection

Show this dialog when a job completes

You can use *File>Alert On Job Completion* to control whether or not the Desktop Client uses the Recently Completed Jobs window. If the menu item has a check mark, GenePattern updates the window, opening it if necessary; otherwise, it does not. To toggle the check mark, select the menu item.

Click *Close* to close the Recently Completed Jobs window.

Reviewing the Results

When your analysis completes, the analysis results files appear under the analysis name in the Results pane. Double-click the analysis name to see the results files:

Results		
Name	Kind	Completed
ComparativeMarker...	Job	3/6/07 9:55 AM
<ul style="list-style-type: none"> ● all_aml_train.co... Comparative Marker Sel... ● gp_task_execut... .txt 		

For more information: see [Results Pane](#) in the *GenePattern Desktop Client Guide*.

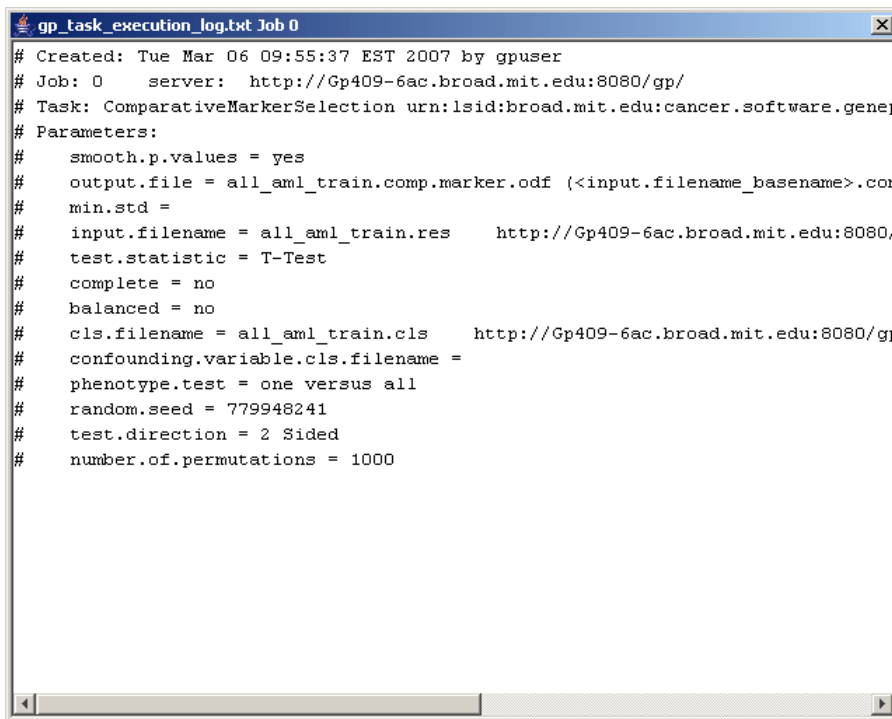
An analysis generates multiple analysis results files, including the results of the analysis, an execution log file, and sometimes additional message or error logs. You can view analysis results in many ways:

- *Results>Open With>Text Viewer* displays the selected file in a text viewer. This is generally the best way to view log files.
- *Results>Open With>Default Application* displays the selected file in the default application (if any) associated with this file type. This can be useful when you have used your operating system to assign default applications to particular file types.
- *Results>Modules* lists the modules in the Visualization menu that can be used to view the selected file. You select the module to use and run it as you did the analysis. This is generally the best way to view analysis results since the Visualization modules are designed for this purpose.

To view the results of the Comparative Marker Selection analysis:

1. Right-click the execution log file, `gp_task_execution_log.txt`, and select *Open With>Text Viewer*.

GenePattern displays the execution log in a text viewer:



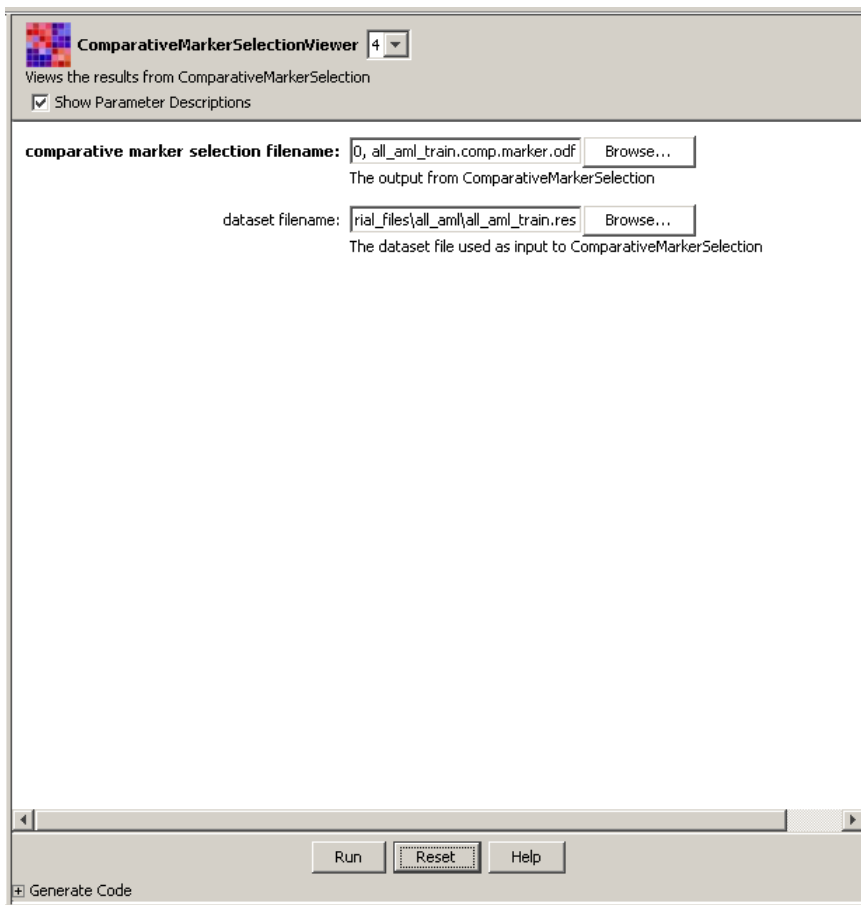
```
# Created: Tue Mar 06 09:55:37 EST 2007 by gpuser
# Job: 0 server: http://Gp409-6ac.broad.mit.edu:8080/gp/
# Task: ComparativeMarkerSelection urn:lsid:broad.mit.edu:cancer.software.gene
# Parameters:
# smooth.p.values = yes
# output.file = all_aml_train.comp.marker.odf (<input.filename_basename>.cor
# min.std =
# input.filename = all_aml_train.res http://Gp409-6ac.broad.mit.edu:8080/
# test.statistic = T-Test
# complete = no
# balanced = no
# cls.filename = all_aml_train.cls http://Gp409-6ac.broad.mit.edu:8080/gp
# confounding.variable.cls.filename =
# phenotype.test = one versus all
# random.seed = 779948241
# test.direction = 2 Sided
# number.of.permutations = 1000
```

2. Close the text viewer by clicking the Close (X) icon in the upper right corner.
3. Right-click the analysis results file, `all_aml_train.comp.marker.odf`, and select *Open With>Text Viewer*. The amount of information it contains makes the file difficult to understand. This file, like most analysis results file, is not intended to be viewed as a text file, but rather intended to be used as input to subsequent analyses.

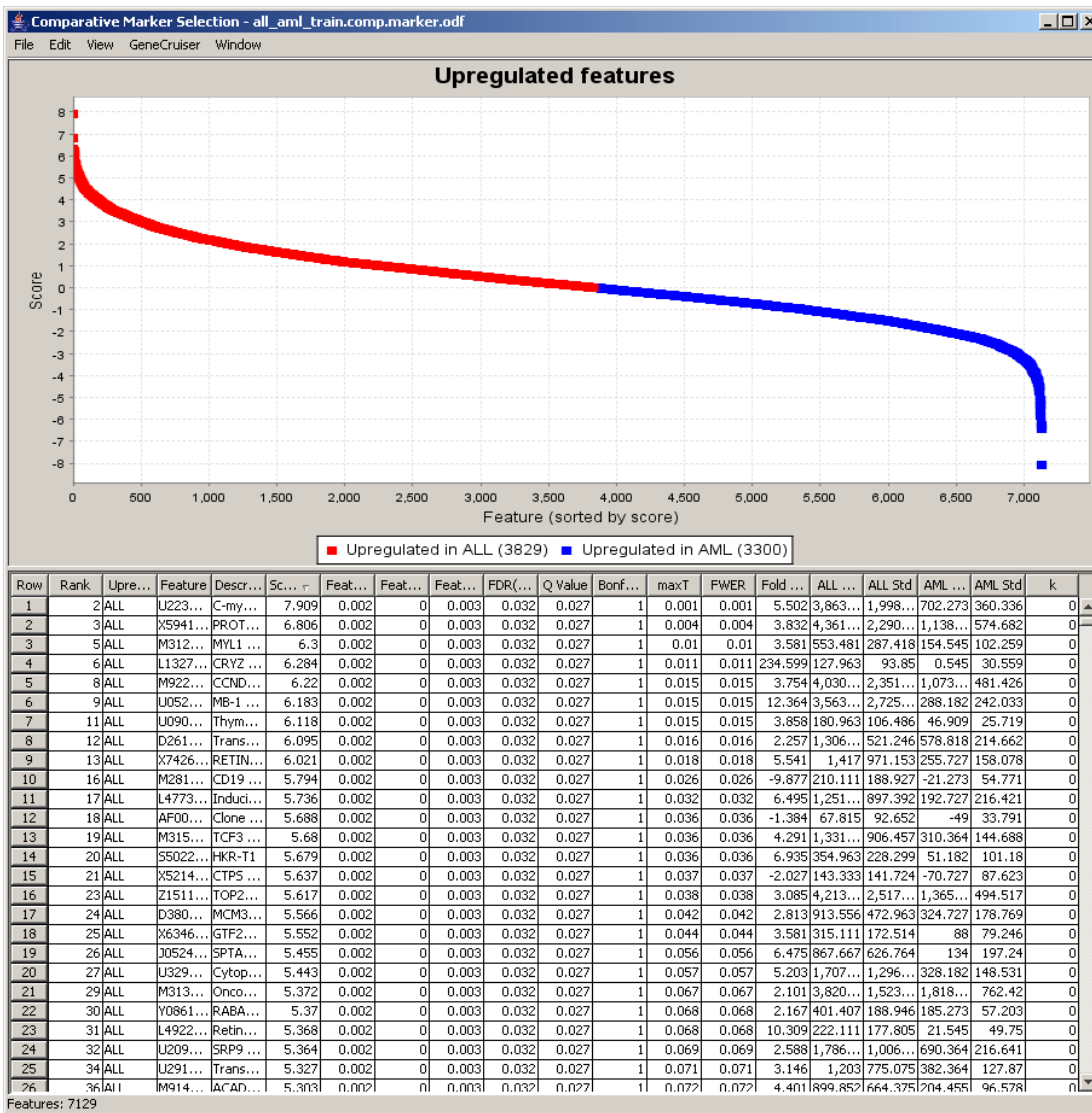
Running the Comparative Marker Selection Viewer

After running the ComparativeMarkerSelection analysis, run the ComparativeMarkerSelectionViewer to examine the analysis results. To run the ComparativeMarkerSelectionViewer:

1. In the Results pane, right-click the analysis results file, `all_aml_train.comp.marker.odf`, and select *Modules>ComparativeMarkerSelectionViewer*. The visualization module and its parameters appear in main window. Notice that the file you selected has been sent to the *input filename* parameter.
2. For the *dataset filename* parameter, select the `all_aml_train.res` file:



3. Click *Run* to run the visualization module. After a few moments, the Comparative Marker Selection Viewer window appears:



Note: If the top portion of the viewer is blank, click *Window>Upregulated Features* to refresh the viewer.

4. In the ComparativeMarkerSelectionViewer:

- The *Score* column shows the value of the metric used to correlate gene expression and phenotype. A high score indicates correlation with the first phenotype (upregulated in ALL) and a low score indicates correlation with the second phenotype (upregulated in AML).
- The middle columns, FDR through FWER, provide different ways to measure the significance of the score. The lower the value the more significant the result. For example, you might choose to measure significance using the false discovery rate (FDR) and set a significance cutoff of $FDR < .05$. Using this measure, you would focus on genes with the lowest and highest scores, where the measure of significance for the score was an $FDR < .05$.

5. To view the documentation for the Comparative Marker Selection Viewer, return to the Desktop Client window and click *Help*. Like analysis modules, each visualization module has its own documentation.

6. To close the Viewer window, return to the Viewer window and click the Close (X) icon in the upper right corner.

In the Desktop Client window, you might notice that the Comparative Marker Selection Viewer module is not listed in the Results pane. This is because the viewer runs on the Desktop Client, not the GenePattern server.

Running Extract Comparative Results

Now that you have examined the ComparativeMarkerSelection analysis results, you want to create a new dataset that contains only the most promising marker genes from the results file for further analysis. To run the ExtractComparativeResults analysis:

1. Right-click the analysis results file, `all_aml_train.comp.marker.odf`, and select *Modules>ExtractComparativeMarkerResults*. The analysis and its parameters appear in the main window. Notice that the file you selected has been sent to the *comparative marker selection filename* parameter.
2. For the *dataset filename* parameter, select the `all_aml_train.res` file.
3. For the *field* parameter, select Rank.
4. For the *max* field, enter 100.

By entering these values, you are creating a dataset based on the top 100 features (genes) in the analysis results file, `all_aml_train.comp.marker.odf`:

ExtractComparativeMarkerResults 3

Creates a derived dataset and feature list file from the results of ComparativeMarkerSelection

Show Parameter Descriptions

comparative marker selection filename: 0, all_aml_train.comp.marker.odf
The results from ComparativeMarkerSelection - .odf

dataset filename: rial_files\all_aml\all_aml_train.res
The dataset file used to select markers - .gct, .res, Dataset

field: Rank
The field to filter features on

min:
Select features with field >= min

max: 100
Select features with field <= max

number of neighbors:
Number of neighbors to select by score in each direction

base output name: election.filename_basename>.filt
The base name for the output files

[Generate Code](#)

5. Click *Run* to start the analysis. The analysis appears in the Results panel with a status of Processing. When the analysis completes, the Desktop Client updates the Completed column to show the data and time the analysis finished and (optionally) adds the finished analysis to the Recently Completed Jobs window.
6. Click *Close* to close the Recently Completed Jobs window.

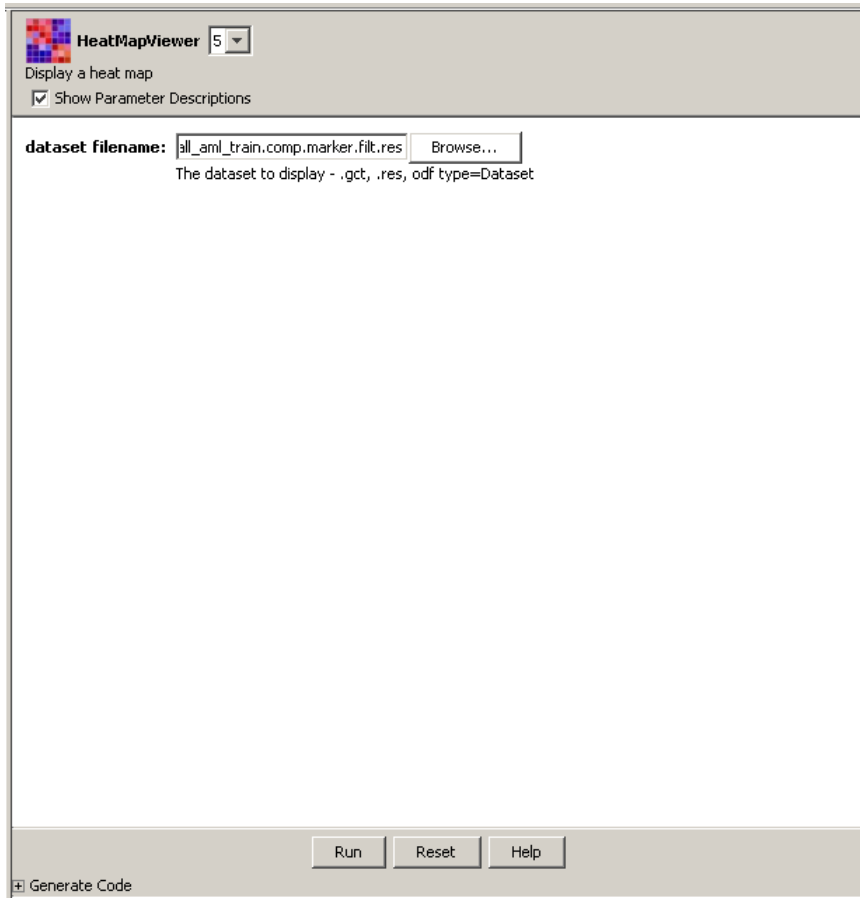
For more information: see [Running Analysis and Visualization Modules](#) in the *GenePattern Desktop Client Guide*.

Running the Heat Map Viewer

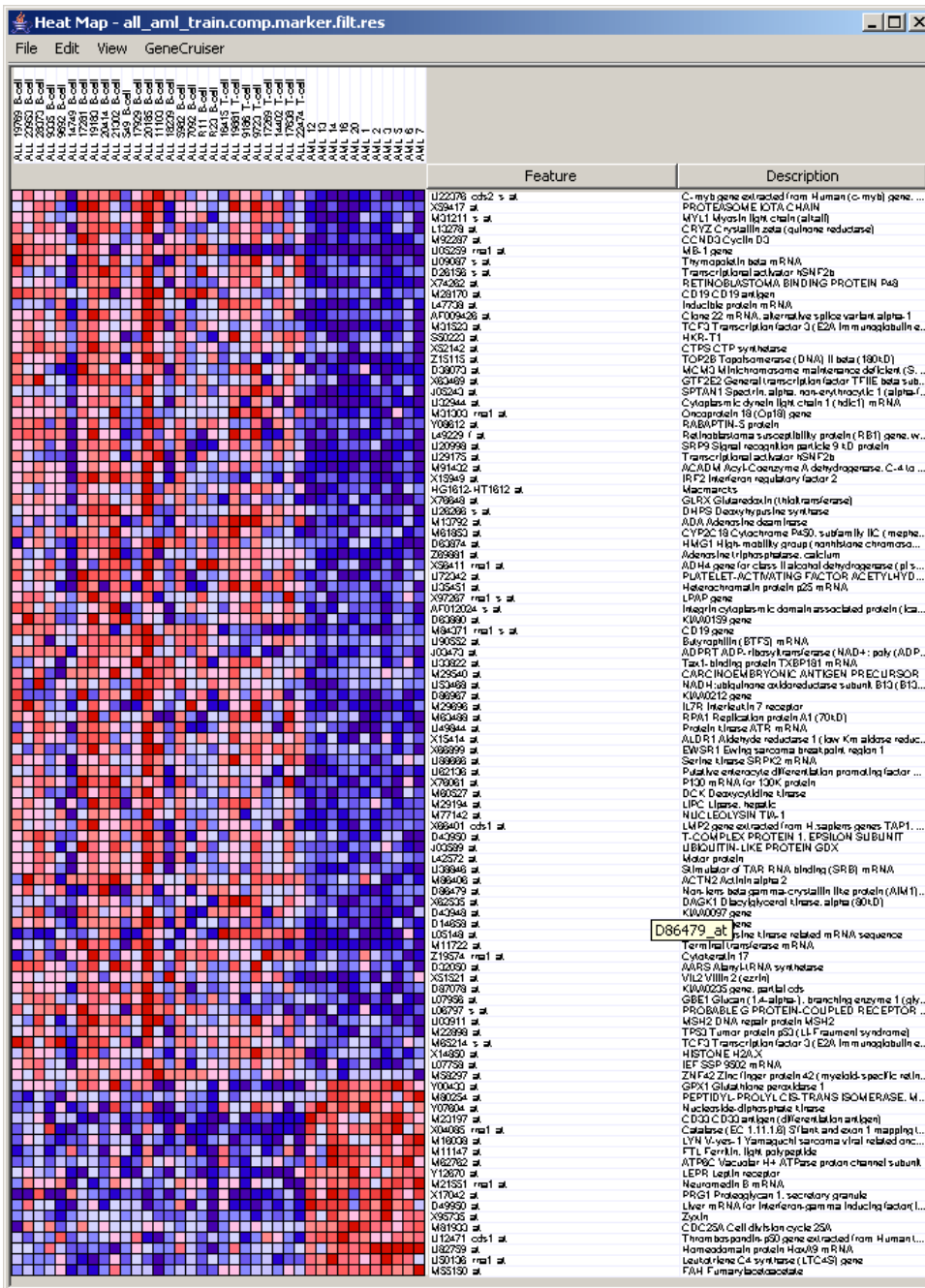
The HeatMapView displays expression values in a color-coded heat map. The largest expression values are displayed in red (hot) and the smallest values are displayed in blue (cool). Intermediate values are displayed in different shades of red and blue. The color-coding provides a quick coherent view of gene expression levels.

To display your new dataset in the HeatMapView:

1. In the Results pane, double-click ExtractComparativeMarkerResults to see the results files.
2. Find the analysis results file, `all_aml_train.comp.marker.filt.res`. (To widen the Name column, click-and-drag the line between the Name and Kind column headings.)
3. Right-click the analysis results file and select *Modules>HeatMapView*. The visualization module and its parameters appear in main window. Notice that the selected file has been sent to the *input filename* parameter:



Click *Run* to run the visualization module. After a few moments, the Heat Map Viewer window appears. The viewer displays dataset expression values in a heat map format: the largest values are displayed as the reddest (hot), the smallest values as the bluest (cool), and the intermediate values as shades of blue and red. You can see by visual inspection which genes are closely correlated with which phenotype.



4. In the Viewer window, adjust the grid size for a clearer view of the sample and feature names:
3. Click *Edit>Display Options*.
4. Click-and-drag the *Grid Size* slider 4 or 5 points to the right. The Viewer displays the grid using larger cells.
5. Optionally, to view the documentation for the Heat Map Viewer, return to the Desktop Client window and click *Help*.
6. To close the Viewer window, return to the Viewer window and click the Close (X) icon in the upper right corner.

You have successfully run an Extract Comparative Marker Results analysis and reviewed the results using the Heat Map Viewer.

Using Pipelines

As you have seen, the GenePattern Desktop Client makes it easy to run individual analyses and to review analysis results. GenePattern pipelines take this one step further: they make it easy to run multiple analyses. You can define a pipeline to run multiple analyses against a single dataset or to run a sequence of analyses, where the output from one analysis becomes the input for a subsequent analysis.

In this tutorial, you have so far run two analyses: Comparative Marker Selection and Extract Comparative Marker Results. The analysis results file from your first analysis became the input file for your second analysis. By running these two analyses, you produced a new dataset that contains the 100 genes in your dataset (`all_aml_train.res`) that are most closely correlated with phenotypes in your class file (`all_aml_train.cls`).

In this section, you will

- Create a pipeline that duplicates your analysis results.
- Run the pipeline.

For more information: see [Working with Pipelines](#) in the *GenePattern Desktop Client Guide*.

Creating a Pipeline Based on Previous Results

You can create a pipeline in one of two ways:

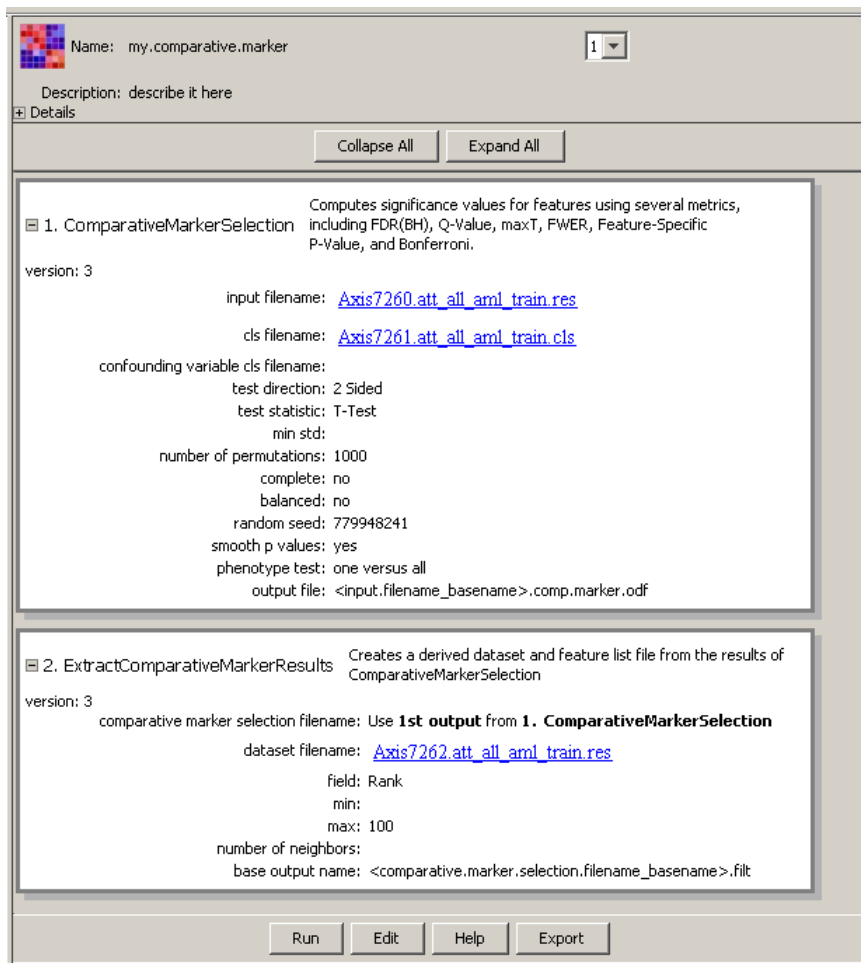
- You can create an empty pipeline and then add to it the analysis modules that you want the pipeline to run.
- You can create a pipeline based on an analysis results file and have the Desktop Client add to the pipeline the analysis modules used to create that results file. After creating the pipeline, the Desktop Client uses the following steps to determine which modules to add to the pipeline:
 1. It adds the module that created the results file.
 2. It checks the module's input file parameter.
 3. If the input file for the module was the output file of a previous module, the Desktop Client adds the previous module and returns to step 2; otherwise, there are no more modules to be added to the pipeline.

To create a pipeline based on the analysis results file from the Extract Comparative Marker Results analysis:

1. Right-click the analysis results file, `all_aml_train.comp.marker.filt.res`, and select *Create Pipeline*. The Desktop Client prompts you for a pipeline name:



2. Enter a name for the pipeline, `my.comparative.marker`, and click *OK*. The Desktop Client displays the new pipeline and its definition:



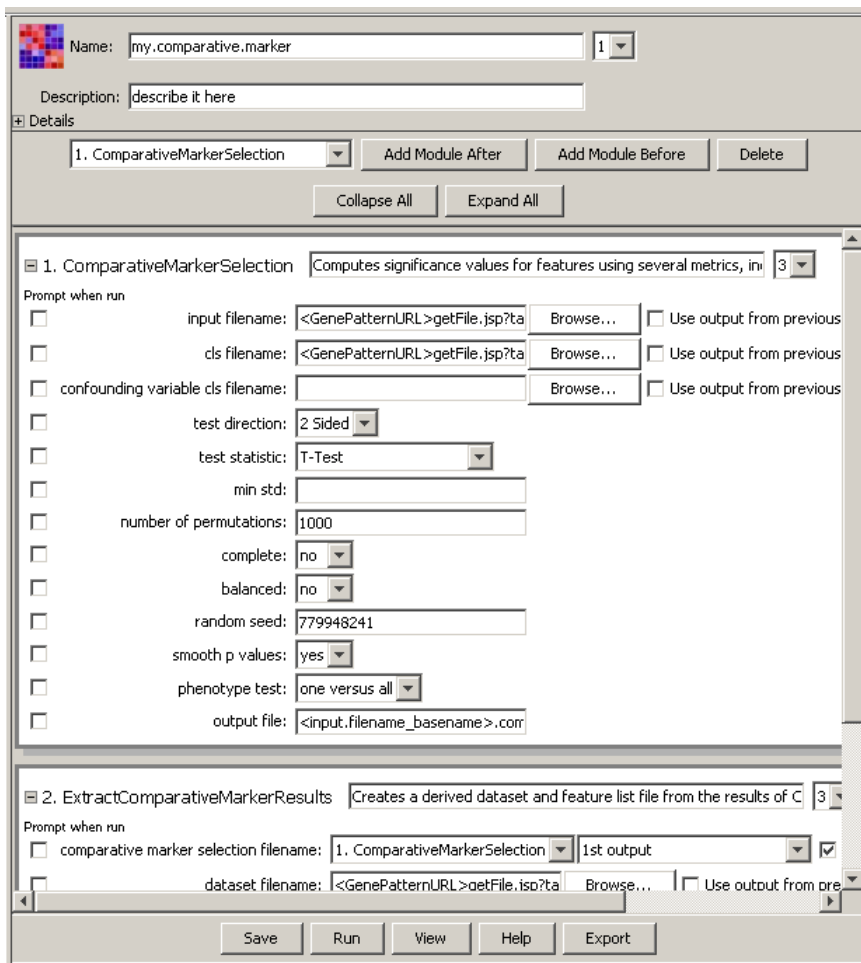
The Desktop Client created the pipeline and then added to it the module that created the results file, Extract Comparative Marker Results. The input file for the Extract Comparative Marker Results module was the output file from Comparative Marker Selection, so the Desktop Client added the Comparative Marker Selection module to the pipeline.

Adding Modules to a Pipeline

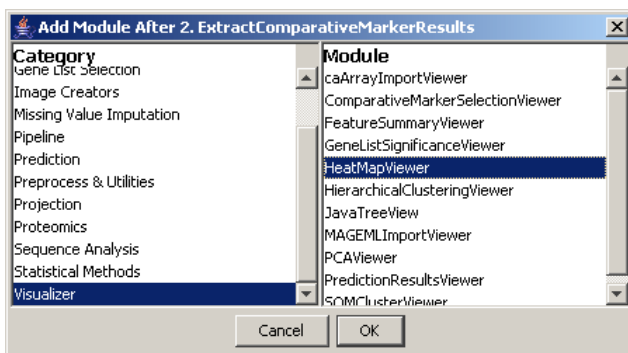
The pipeline contains the two analysis modules used to create the analysis results file: Comparative Marker Selection and Extract Comparative Marker Results. In your original analysis, after creating the analysis results file, you used the Heat Map Viewer to review the results.

To add the Heat Map Viewer module to your pipeline:

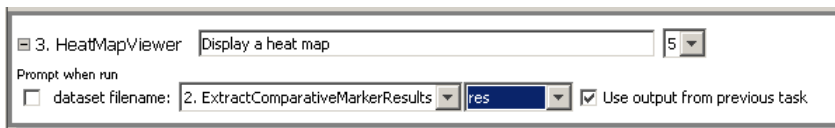
1. Click *Edit* (at the bottom of the window). The Desktop Client opens the pipeline definition for editing:



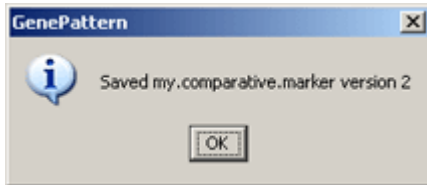
2. Click on the second module in the pipeline, ExtractComparativeMarkerResults, to select it.
3. Click *Add Module After* (near the top of the window). The Desktop Client displays the Add Module window.
4. Select Visualizer from the Category list. (You may need to scroll the list.) The Desktop Client populates the Module list with all of the modules in the Visualization menu.
5. Select HeatMapView from the Module list:



6. Click *OK*. The Desktop Client adds the HeatMapView module after the ExtractComparativeMarkerResults module in the pipeline definition window.
7. Make the value of the *filename* parameter for the HeatMapView the analysis results file from the ExtractComparativeMarkerResults module:



1. Select the *Use output from previous task* check box. The Desktop Client adds the Choose Task drop-down list to the *filename* parameter field.
2. Select ExtractComparativeMarkerResults from the Choose Task drop-down list. The ExtractComparativeMarkerResults module generates multiple analysis results files; therefore, the Desktop Client adds the Dataset drop-down list to the *filename* parameter field.
3. Select res from the Dataset drop-down list.
8. Click Save (at the bottom of the window) to save your changes. The Desktop Client saves the pipeline and displays the following confirmation message:



9. Click OK to close the confirmation message window.

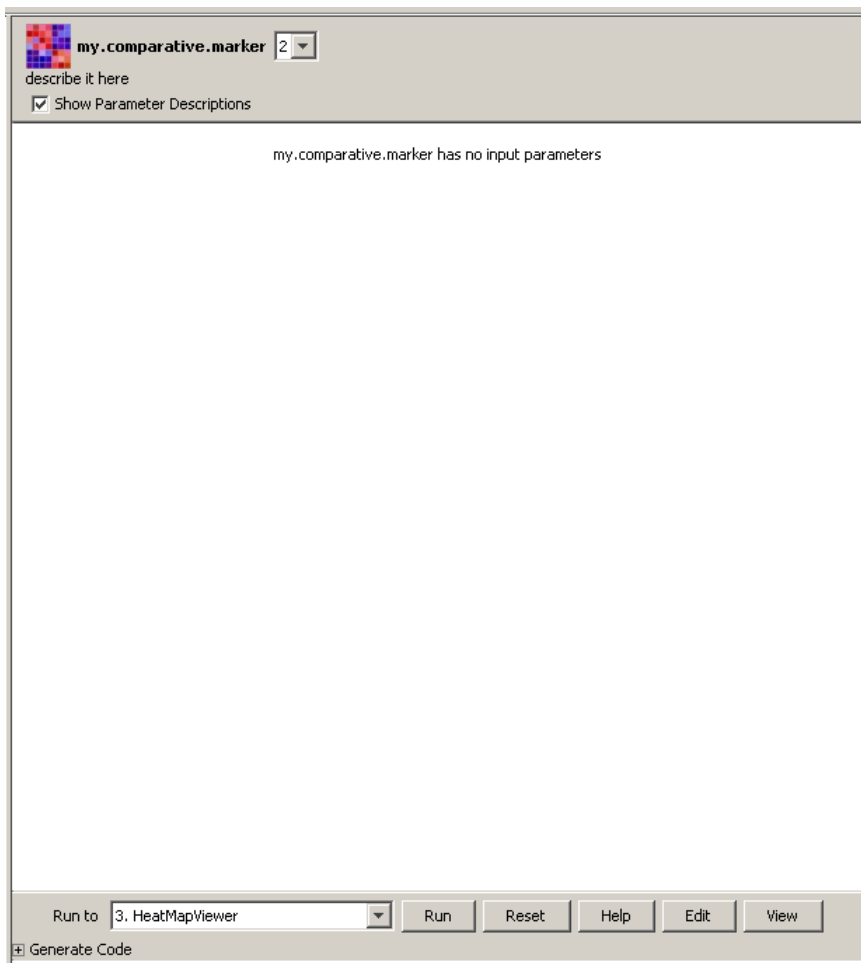
Editing a pipeline always creates a new version of this pipeline. This ensures that you can always reproduce any analysis that you have run, even if you subsequently change the pipeline that you originally used to run the analysis.

For more information: see [Understanding Version Numbers](#) in the *GenePattern Concepts Guide*.

Running the Pipeline

To run the pipeline:

1. Select *Pipelines>my.comparative.marker*. (Notice that the pipeline names are color-coded; the pipelines you create are displayed in pink.) The Desktop Client displays your pipeline in the main window:



2. Click *Run* to run the pipeline. The pipeline name appears in the Results window with a status of processing. After a short time, the Heat Map Viewer appears and the pipeline completes.

When the pipeline completes, the Desktop Client updates the Completed column to show the data and time the analysis finished and (optionally) adds the finished pipeline to the Recently Completed Jobs window.

3. Close the Heat Map Viewer and the Recently Completed Jobs window.
4. Double-click the pipeline name in the Results pane to see the analysis results files. Notice that all of the results files for all of the analyses appear under the pipeline name.

Analysis and visualization modules run from a pipeline work exactly the same as those run directly from the Desktop Client. If you run a Viewer from a pipeline, it gets displayed just as if you ran it directly from the Desktop Client. Analysis results files generated by a pipeline are exactly the same as those generated by modules run directly from the Desktop Client.

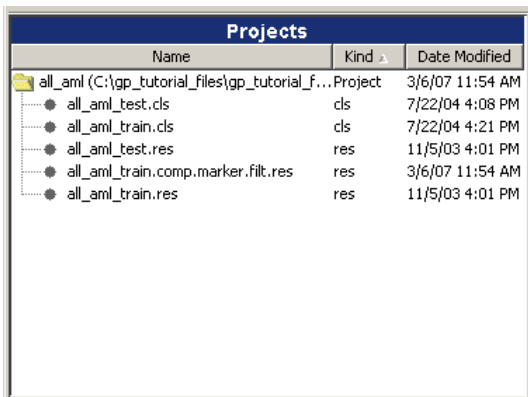
Saving and Deleting Analysis Results

As described earlier in the tutorial, when you run an analysis or a pipeline, the Desktop Client sends your request to the GenePattern server. The GenePattern server runs the analysis and notifies the Desktop Client when the analysis or pipeline completes. The analysis results files that appear in the Results pane of the Desktop Client window are actually stored on the GenePattern server. Server storage is temporary and analysis results files are deleted after they have been on the server for a certain length of time (by default, one week).

To save your analysis results files, you must copy each file from the server to a more permanent location. If you do not need your analysis results, you can delete them from the server at any time, which also removes them from the Results pane.

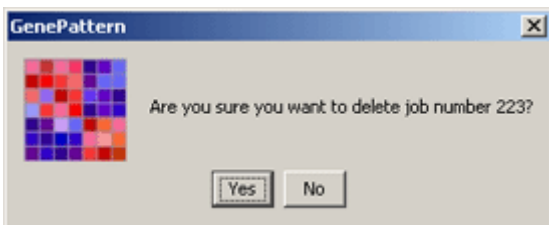
To save an analysis results file:

1. In the Results pane, click the file that you want to save. For example, click the analysis results of the ExtractComparativeMarkerResults analysis, `all_aml_train.comp.marker.filt.res`.
2. Select *Results>Save To*. GenePattern displays the *Save To* submenu, which lists your project directories and an *Other* item.
3. Select your project directory. GenePattern copies the file to the selected directory and then refreshes the Projects pane to include the new file:



You can delete an analysis results file in much the same way that you save one: click the file that you want to delete and select *Results>Delete File*. Or, you can delete an analysis and all of its results files. To delete an analysis and its results files:

1. In the Results pane, click the analysis that you want to delete. For example, click the ExtractComparativeMarkerResults analysis.
2. Select *Results>Delete Job*. A confirmation window appears:



3. Select *Yes* to delete the job and its analysis results files. The GenePattern Client deletes the analysis and all its results files from the GenePattern server and the Results pane. Notice that the file you saved is not affected; it remains in your project directory.

For more information: see [Working with Analysis Results](#) in the *GenePattern Desktop Client Guide*.

Synchronizing the Desktop Client and Server

The GenePattern Desktop Client is a software application. When you start the Desktop Client, it connects to the GenePattern server, reads information from the server, and builds the application interface. The Analysis, Visualization, Pipelines, and Suites menus and the contents of the Results pane all reflect information read from the GenePattern server at a particular point in time. Periodically, the Desktop Client retrieves updated information from the GenePattern server; for example, when you run an analysis, the Desktop Client updates the Results pane to include the new analysis results files. However, you may need to refresh the Desktop Client to ensure that the information it displays reflects the current content of the GenePattern server.

To see how this works, you will use the Web Client to make a few changes to the GenePattern server. Then, you will return to the Desktop Client, notice that it does not reflect the changes that you made, and refresh the display.

To make a few changes in the Web Client:

1. Start the GenePattern Web Client:
 1. Double-click the GenePattern Web Client icon:



GenePatternH
ome.html

2. When the Web Client displays the login page, enter your username (or username and password).
3. Click Sign In. The Web Client displays the start page.
2. Notice that the Recent Jobs pane lists the jobs that you have run in Desktop Client:
3. Delete by most recent job:
 1. Note the job number. Later, you will look for this job in the Desktop Client.
 2. Click on the icon next to the job name to display the job menu.
 3. Click *Delete*.
4. Notice that Modules & Pipelines pane lists the pipeline that you created in the Desktop Client:
5. Delete the pipeline:
 1. Click *Modules & Pipelines>Manage*.
 2. Click the check box next to the name of your pipeline. The Web Client selects all versions of your pipeline.
 3. Scroll to the bottom of the page and click *delete* (at the bottom of the column of check boxes). The Web Client deletes all versions of your pipeline.

Now, examine your changes in the Desktop Client:

1. Return to the Desktop Client.
2. Examine the Results pane. Notice that it lists the job that you deleted using the Web Client:
3. Click *File>Refresh>Jobs*. The Desktop Client connects to the GenePattern server, retrieves information about all analyses that you have run, and updates the Results pane. The deleted job disappears.
4. Examine the Pipelines menu. Notice that it includes the *my.comparative.marker* pipeline, which you deleted using the Web Client.
5. Click *File>Refresh>Modules*. The Desktop Client connects to the GenePattern server, retrieves the list of modules (analysis modules, visualization modules, pipelines, and suites) from the server, and updates the Analysis, Visualization, Pipelines, and Suites menus.
6. Examine the Pipelines menu. Notice that it no longer includes the *my.comparative.marker* pipeline.

Part 3: Shutting Down the GenePattern Server

Shutting Down GenePattern

When you are finished working with GenePattern, you can shutdown both the clients and the server. Remember that the clients are connected to the server; therefore, you want to exit from the clients before you shutdown the server. If you shutdown the server first, the clients will display error messages as they attempt to contact the server.

To exit from GenePattern:

1. Exit from the Desktop and Web clients.
 - To exit from the GenePattern Desktop Client, select *File>Quit*.
 - To exit from the GenePattern Web Client, click the *sign out* link in the top right corner of the title bar and then close the web browser window.
2. Shutdown the server by double-clicking the Stop GenePattern Server icon, shown below. Alternative: if you are using Windows, you can close the console window.



StopGenePatternServer

On Windows, when you shutdown GenePattern, the GenePattern console window closes. On Mac OS X, the GenePattern server icon disappears from the Dock. On Linux machines, the GenePattern server exits silently.

Learning More About GenePattern

Thank you for taking this time to learn about GenePattern!

As you continue to work with GenePattern, please visit the [GenePattern web site](#), which provides an overview of the GenePattern analysis modules, as well as links to the GenePattern software and documentation.

We welcome your feedback. If you have suggestions, comments, or questions that are not answered by the documentation, contact the GenePattern help desk (gp-help@broad.mit.edu).